

www.iceage2game.com

Vivendi Universal Games
4247 S. Minnewawa Ave., Fresno, CA 93725



Ice Age 2: The Meltdown™ & © 2006 Twentieth Century Fox Film Corporation. All rights reserved. Twentieth Century Fox, Ice Age 2: The Meltdown and their associated logos are registered trademarks or trademarks of Twentieth Century Fox Film Corporation. Sierra and the Sierra logo are registered trademarks or trademarks of Sierra Entertainment, Inc. in the U.S. and/or other countries. Vivendi Universal Games and the Vivendi Universal Games logo are trademarks of Vivendi Universal Games, Inc. The ratings icon is a registered trademark of the Entertainment Software Association. All other trademarks are property of their respective owners.

7244510

PRINTED IN USA

GAME BOY ADVANCE



AGB-BIAE-USA
ICE AGE 2TM
THE MELTDOWN



INSTRUCTION BOOKLET



PLEASE CAREFULLY READ THE SEPARATE HEALTH AND SAFETY PRECAUTIONS BOOKLET INCLUDED WITH THIS PRODUCT BEFORE USING YOUR NINTENDO® HARDWARE SYSTEM, GAME PAK OR ACCESSORY. THIS BOOKLET CONTAINS IMPORTANT HEALTH AND SAFETY INFORMATION.

IMPORTANT SAFETY INFORMATION: READ THE FOLLOWING WARNINGS BEFORE YOU OR YOUR CHILD PLAY VIDEO GAMES.

⚠ WARNING - Seizures

- Some people (about 1 in 4000) may have seizures or blackouts triggered by light flashes or patterns, such as while watching TV or playing video games, even if they have never had a seizure before.
- Anyone who has had a seizure, loss of awareness, or other symptom linked to an epileptic condition should consult a doctor before playing a video game.
- Parents should watch when their children play video games. Stop playing and consult a doctor if you or your child have any of the following symptoms:

Convulsions

Eye or muscle twitching

Loss of awareness

Altered vision

Involuntary movements

Disorientation

- To reduce the likelihood of a seizure when playing video games:
 1. Sit or stand as far from the screen as possible.
 2. Play video games on the smallest available television screen.
 3. Do not play if you are tired or need sleep.
 4. Play in a well-lit room.
 5. Take a 10 to 15 minute break every hour.

⚠ WARNING - Repetitive Motion Injuries and Eyestrain

Playing video games can make your muscles, joints, skin or eyes hurt after a few hours. Follow these instructions to avoid problems such as tendinitis, carpal tunnel syndrome, skin irritation or eyestrain:

- Avoid excessive play. It is recommended that parents monitor their children for appropriate play.
- Take a 10 to 15 minute break every hour, even if you don't think you need it.
- If your hands, wrists or arms or eyes become tired or sore while playing, stop and rest them for several hours before playing again.
- If you continue to have sore hands, wrists or arms or eyes during or after play, stop playing and see a doctor.

⚠ WARNING - Battery Leakage

Nintendo portable video game systems contain a rechargeable lithium ion battery pack. Leakage of ingredients contained within the battery pack, or the combustion products of the ingredients, can cause personal injury as well as damage to your hardware. If battery leakage occurs, avoid contact with skin. If contact occurs, immediately wash thoroughly with soap and water. If liquid leaking from a battery pack comes into contact with your eyes, immediately flush thoroughly with water and see a doctor.

To avoid battery leakage:

- Do not expose battery to excessive physical shock, vibration, or liquids.
- Do not disassemble, attempt to repair or deform the battery.
- Do not dispose of battery pack in a fire.
- Do not touch the terminals of the battery, or cause a short between the terminals with a metal object.
- Do not peel or damage the battery label.

The official seal is your assurance that this product is licensed or manufactured by Nintendo. Always look for this seal when buying video game systems, accessories, games and related products.



Nintendo does not license the sale or use of products without the Official Nintendo Seal.

THIS GAME PAK WILL WORK ONLY WITH THE GAME BOY® ADVANCE, GAME BOY® MICRO, OR NINTENDO DS™ VIDEO GAME SYSTEMS.

IMPORTANT LEGAL INFORMATION

Copying of any video game for any Nintendo system is illegal and is strictly prohibited by domestic and international intellectual property laws. "Back-up" or "archival" copies are not authorized and are not necessary to protect your software. Violators will be prosecuted.

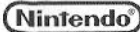
This video game is not designed for use with any unauthorized copying device or any unlicensed accessory. Use of any such device will invalidate your Nintendo product warranty. Nintendo (and/or any Nintendo licensee or distributor) is not responsible for any damage or loss caused by the use of any such device. If use of such device causes your game to stop operating, disconnect the device carefully to avoid damage and resume normal game play. If your game ceases to operate and you have no device attached to it, please contact the game publisher's "Technical Support" or "Customer Service" department.

The contents of this notice do not interfere with your statutory rights.

This booklet and other printed materials accompanying this game are protected by domestic and international intellectual property laws.



LICENSED BY



NINTENDO, GAME BOY, GAME BOY ADVANCE AND THE OFFICIAL SEAL ARE TRADEMARKS OF NINTENDO.
© 2001 NINTENDO. ALL RIGHTS RESERVED.

ICE AGE 2™ THE MELTDOWN

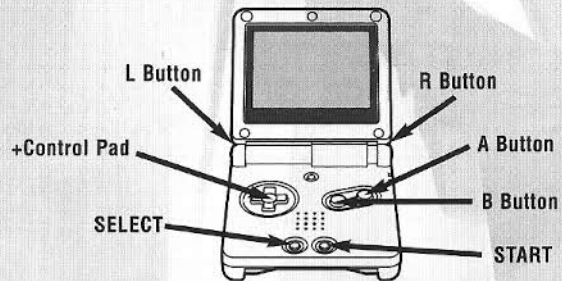
TABLE OF CONTENTS

Starting the Game	2
Game Controls	3-4
Introduction	5
Getting Started	5-8
Playing the Game	9-14
Credits	15-16
Customer Support	18
License Agreement	18



Ice Age 2 The Meltdown™ & © 2006 Twentieth Century Fox Film Corporation. All rights reserved. Twentieth Century Fox, Ice Age 2 The Meltdown and their associated logos are registered trademarks or trademarks of Twentieth Century Fox Film Corporation. Sierra and the Sierra logo are registered trademarks or trademarks of Sierra Entertainment, Inc. in the U.S. and/or other countries. Vivendi Universal Games and the Vivendi Universal Games logo are trademarks of Vivendi Universal Games, Inc. Curtain technology © 2006 Amaze Entertainment, Inc. Amaze Entertainment and the Amaze Entertainment logo are registered trademarks of Amaze Entertainment, Inc. in the United States and/or other countries. All other trademarks are property of their respective owners.

STARTING THE GAME

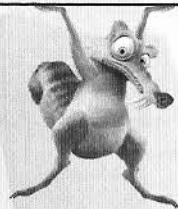


1. Turn OFF the power switch on your Nintendo® Game Boy® Advance.
Never insert or remove a Game Pak when the power is ON.
2. Insert the *Ice Age 2 The Meltdown* Game Pak into the slot on the Game Boy® Advance. To lock the Game Pak in place, press firmly.
3. Turn ON the power switch.
4. The Legal Screen appears, followed by the introduction sequence.
5. When the Title screen appears, press START to advance to the Main Menu. (pg. 6)

GAME CONTROLS

SCRAT RUSH

CONTROL	ACTION
+ Control Pad	Move Scrat Left and Right
A Button	Lunge / Bounce
B Button	Jump (Press in the air for double jump)
L Button	Slide. Knocks down smaller obstacles and enemies
R Button	Slide. Knocks down smaller obstacles and enemies
START	Pause / Pause Menu
SELECT	Not used



PUZZLE-ADVENTURE MODE

CONTROL	ACTION
+ Control Pad	Move Manny, Diego or Sid
A Button	Action Button (Context sensitive. See page 12)
B Button (Press and Hold)	Press and hold to freely look around current map
L Button	Swap character
R Button	Swap character
START	Pause / Pause Menu
SELECT	Stranded Animals Menu

BOSS BATTLES

CONTROL	ACTION
+ Control Pad	Left/Right rotates raft - Up/Down paddles forward and backward
A Button (Press and Hold)	Manny's trunk spray
B Button	Diego's forward claw attack
L Button	Reverse
R Button	Forward
START	Pause / Pause Menu

INTRODUCTION

The Ice Age is coming to an end! The ice dam is melting, and a pair of sinister aquatic reptiles—Maelstrom and Cretaceous—have shown up to speed things along. Take control of three unlikely friends—Manny, Sid and Diego—and guide them through a series of unique puzzle-laden environments to rescue stranded animals. In between these levels, you can help Scrat collect all of his acorns in special high-speed Scrat Rush challenges.

Manny, Sid and Diego start the big migration of mammals from "The Waterpark" to the far end of a wide valley where a fallen sequoia tree serves as an escape for the fleeing population. Along the way, the trio meets another mammoth, Ellie, and her two mischievous possum "brothers", Crash and Eddie, who decide to join in the adventures.

GETTING STARTED

TITLE SCREEN

Insert the *Ice Age 2 The Meltdown* Game Pak into the Game Boy® Advance and turn on the system. Press **START** on the title screen to begin the game.

MAIN MENU SCREEN

To select one of these options, push Up or Down on the **+Control Pad** and press the **A Button**:

NEW GAME: Start a NEW GAME.

CONTINUE: Choose a previously SAVED GAME to play.

OPTIONS: Go to the OPTIONS menu.

NEW GAME

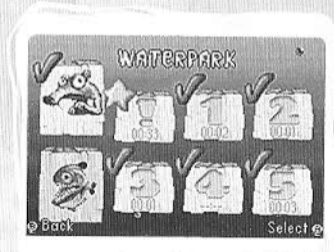
1. Use the **+Control Pad** to select a save slot and press the **A Button**. If the save slot already contains game data, you will be asked if you wish to erase the old data. Choosing NO or pressing the **B Button** will allow you to select another save slot. Choosing YES will clear the slot.
2. Select a creature's portrait to represent your save slot by pressing Up or Down on the **+Control Pad** and pressing the **A Button**. This will take you to the Level Select menus.

CONTINUE

1. Use the **+Control Pad** to highlight the slot of a previously saved game.
2. Press the **A Button** to select your previous game.
3. Once on the map screen, use the **+Control Pad** to choose which world area you wish to explore and press the **A Button**. This will take you to the Level Select menus.

LEVEL SELECT MENUS

1. The Level Select screen gives you access to any unlocked adventure levels in the selected world area, as well as the Scrat Rush levels and the Boss levels (assuming all other levels have been completed).
2. Use the **+Control Pad** to move around and select any available level to enter. Levels must be completed in chronological order, however, so you aren't allowed to jump ahead, but you may replay previously completed levels.
3. The time code below each level number indicates your best level completion time.
4. Press the **B Button** to back out of this Menu.

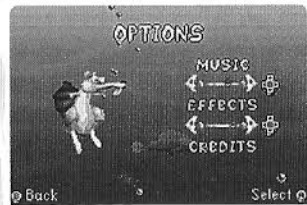


OPTIONS MENU

TO ADJUST GAME OPTIONS:

1. To adjust the music volume, highlight the MUSIC option by using the **+Control Pad**. Once MUSIC is highlighted, press left on the **+Control Pad** to decrease the music's volume and right to increase the volume. The slider will adjust accordingly.
2. To adjust the sound effect volume, highlight the EFFECTS option by using the **+Control Pad**. Once highlighted, press left on the **+Control Pad** to decrease the volume and right to increase the volume. The slider will adjust accordingly.
3. To view the game's credits, use the **+Control Pad** to highlight CREDITS. Press the **A Button** to view the credits.

At any point, press **B Button** to back out of the credit sequence and return to the previous step.



PLAYING THE GAME

SCRAT RUSH

After beginning a new location on the world hub, players first control Scrat in a high-speed, side-scrolling mini-game: Scrat Rush. The goal is to get Scrat to the end of the level while collecting as many acorns as possible. An indicator in the HUD keeps track of how many acorns Scrat has. A bonus multiplier counts the amount of acorns Scrat has at the end of the level. The more acorns the player has, the higher the bonus.

Acorn Count

Time Remaining

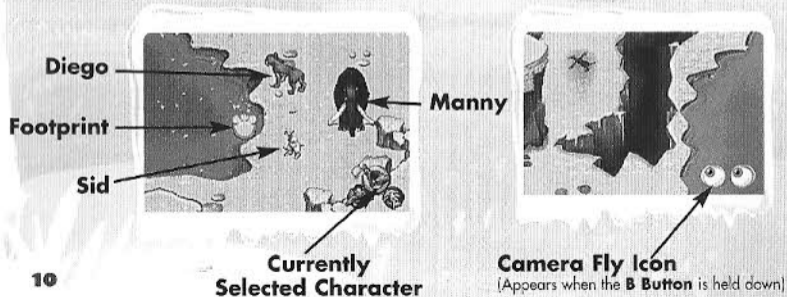
Scrat

Instructive Icons



PUZZLE/ADVENTURE

After successfully completing a Scrat Rush level, players enter one of several Puzzle/Adventure levels. Manny, Sid and Diego work together to get to the goal of the level. Each character has a separate path and puzzle elements, which are navigated using each of the character's unique abilities. If you lose your way, find the footprint markers to get back on track! Sid's footprints are red, Manny's are blue and Diego's are green. Players can switch the current character at any time by pressing the **L Button** or **R Button**. The current character is represented by a larger portrait in the HUD, while the character that will be accessed by the next **L Button** or **R Button** press is shown to either side.



PLAYER MOVEMENT AND ACTION

MOVEMENT

Sid, Manny and Diego's movements about the world are limited by certain terrain features

SID

- Moves as normal but cannot enter dangerous terrain
- Automatically enters swimming mode when moved into water
- Moves over slippery terrain as normal
- Automatically activates pressure plates when standing on them or passing over them

MANNY

- Moves as normal but cannot enter weak terrain
- Automatically enters floating mode when moved into water
- Slides on slippery terrain until he encounters an obstacle
- Automatically activates pressure plates when he stands on or passes over them

DIEGO

- Moves as normal but cannot enter water
- Slides on slippery terrain until he encounters an obstacle
- Automatically activates pressure plates when he stands on or passes over them, unless he's dashing (see next page)



ACTION

The function of the Action Button (**A Button**) depends on the character selected and his location on the map.

SID

Climb – If facing a climbing wall, he jumps on and climbs up.

Burn – If facing a meltable object, he will light a fire and burn it.

MANNY

Push – Manny will lower his head and enter into a pushing state. When he pushes into push blocks in this state, he can move them.

Toss – If next to Sid and on a toss hotspot, he will toss Sid over the gap.

DIEGO

Claw – Makes a claw attack in the direction he is facing. If facing a breakable object or an enemy, the claw attack will destroy it.

Jump – If facing a gap on a hotspot, he jumps over the gap. If standing on specific hotspots, Diego can also jump onto Manny's back to get across water.

Dash – Diego can dash over pressure plates to avoid activating them. As long as he doesn't stop on a pressure plate, it will not activate - available at dash hotspots.

PAUSE MENU

To access the pause menu, press **START**.

Continue: Resume gameplay.

Sound Volume: Adjust volume of sound FX.

Music Volume: Adjust volume of the music.

Restart Level: Restart player at the beginning of the level.

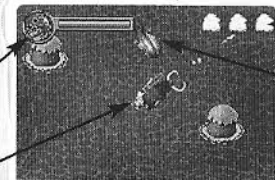
Exit Level: Exit to the level selection screen.

BOSS BATTLES

To exit each of the five areas, you must do battle with a host of water-borne beasts. Use the **+Control Pad** to move the heroes through the water on their ice raft. Dispatch the boss's small minions with a powerful blast of water from Manny's trunk. But to take out the boss, you'll want to use Diego's sharp claws.

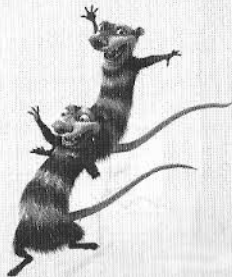
Boss Health Meter

Player's Raft



Raft Hit Points

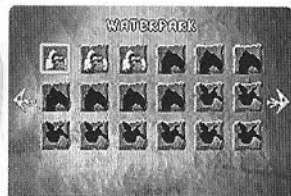
Enemy Boss



STRANDED ANIMALS MENU

Along their journey, players will find stranded animals scattered about the maps. There are a total of 80 stranded animals to find and rescue throughout the game. To rescue a stranded animal, simply touch or walk into them on the adventure maps. Some stranded animals are easy to spot, while others will require a little more puzzle solving to reach.

Once a stranded animal is rescued, it is added to the player's Stranded Animal Book, accessible by pressing **SELECT**. Here, a picture of each animal appears along with its name and a biographical sketch.



CREDITS

A very special thanks to all of the wonderfully talented and brilliantly creative individuals at Blue Sky Studios for their guidance, support and continued inspiration. We could not have done it without you.

Fox Animation
Chris Meledandri
Kate Lewine

Special Thanks
Elie Dekel
Luke Letizia
Jamie Samson
Kate Carlyle
Erik Larson
Gail Harrison
Porscha Ricketts

Amaze Entertainment Executive Producers
Dan Elenbaas
David Mann

Executive Studio Director
Steve Ettinger

Producer
Mike Platteter

Associate Producer
Ryan Silva

Lead Programmer
Stephen Nguyen

Lead Artist
Scott Brothers

Programmers
Josh Meeds
Jordan Phillips

Modeling & Animation
Gabe Jackson
Travis Guadan

Background Artists
Eli Heuer
Paul Marshall
Michael Wilcox
Nathan Lombardi

Level Design
Kelly Toyama

Music
Ian Stocker

Sound Design
Matt Piersall

Audio Production
Joseph Graves

Writer
Darby McDevitt

Additional Art
Ryan Silva
Tom Snider
Mark Ferrari

Testing Lead
Elizabeth Cummins

QA Tester
Cameron Handyside

Development Manager
Michelle Gingrich

Technical Director
Doug Schilling

Art Director
Randy Briley

Senior Environmental Artist
Michael Wilcox

Creative Director
Phil Trumbo

Director of Development Services
Jack Brummet

Director of Operations and Finance
Mike Dean

Director of Marketing
Curtis Asplund

Special Thanks to Amaze Entertainment Operations
Stephanie Card
Susan DeMerit
Stephanie Hjertager
Christian Kimball
Matt McIntire
Paul Stokes

Special Thanks
Ren and Jillian Cummins
Luna Meeds
Lo-An "Bella" Nguyen
Martin Korh

CREDITS

Vivendi Universal Games

Producer

Mike Schneider

Associate Producer

Luke Thai

Executive Producer

Greg Goodrich

**Vice President &
Executive in Charge
of Production**

Kelly Ryan

**Executive Vice
President of
Worldwide Studios**

Peter Della Penna

Technical Director

Brian Leake

**Vice President, Global
Marketing**

Al Simone

Director, Marketing

Ivo Gerscovich

**Associate Brand
Manager, Marketing**

Glenn Gregory

Senior PR Manager

Erik Reynolds

**Director, Business &
Legal Affairs**

Brent Rabowsky

Special Thanks:

**Chief Operating
Officer and President,
North America**

Phil O'Neil

**Executive Vice
President, Chief
Strategy and
Marketing Officer**

Cindy Cook

**Senior Vice President,
Global Marketing**

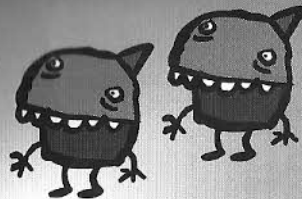
Ed Zobrist

**Vice President,
Communications**

Leslie Hollingshead



Keeps™



Meet Honkatz™ at Honkatz.com!

Kids ask your parents permission before going online.



HAVE IT YOUR WAY.®



TM & © 2005 Burger King Brands, Inc. All rights reserved.

CUSTOMER SUPPORT

Technical Support

Phone: (800) 630-0811,

6:00 AM-6:00 PM EST

Online Support:

<http://support.vugames.com>

Customer Service

Phone: (800) 757-7707,

6:00 AM-6:00 PM EST

Mail

VU Games

4247 South Minnewawa Avenue

Fresno, CA 93725

GET INSIDE!
Join Now!

Register Your Game Today

Free tips, tricks, demos, trailers, and more! Receive free technical and customer support. Be the first to know about beta tests, tournaments, game testing opportunities, and other events. Plus, stay informed on the latest VU Games news, updates, discounts & more!

Go to <http://reg.vugames.com> Now!

LICENSE AGREEMENT

This software program, any printed materials, any online or electronic documentation (the "Program") are the copyrighted work of VU Games, Inc., or its licensors. All use of the Program is governed by the terms of the End User License Agreement which is provided below ("License"). The Program is solely for use by end users according to the terms of the License Agreement. Any use, reproduction or redistribution of the Program not in accordance with the terms of the License Agreement is expressly prohibited.

END USER LICENSE AGREEMENT

- Limited Use License.** VU Games, Inc. ("VUG") hereby grants, and by utilizing the Program you thereby accept, a limited, nonexclusive license and right to use one (1) copy of the Program for your use on Nintendo Game Boy® Advance game system.
- Ownership.** All title, ownership rights and intellectual property rights in and to the Program and any and all copies thereof (including but not limited to any titles, computer code, themes, objects, characters, character names, stories, text, dialog, catch phrases, locations, concepts, artwork, animations, sounds, musical compositions, audiovisual effects, methods of operation, moral rights, any related documentation, and "applets" incorporated into the Program) are owned by VUG or its licensors. The Program is protected by the copyright laws of the United States, international copyright treaties and conventions and other laws. All rights are reserved. The Program may contain certain licensed materials, and VUG's licensors may act to protect their rights in the event of any violation of this Agreement.
- Responsibilities of End User.**

A. Subject to the Limited Use License as set forth above, you may not, in whole or in part, copy, photocopy, reproduce, translate, reverse engineer, derive source code from, modify, disassemble, decompile, or create derivative works based on the Program, or remove any proprietary notices or labels on the Program without the

prior consent, in writing, of VUG.

B. You are entitled to use the Program for your own use, but you are not entitled to sell, grant a security interest in or transfer reproductions of the Program to other parties in any way, nor to rent, lease or license the Program to others without the prior written consent of VUG; or exploit the Program or any of its parts for any commercial purpose.

- Program Transfer.** You may permanently transfer all of your rights under this License, provided the recipient agrees to the terms of this License.
- Termination.** This License is effective until terminated. You may terminate the License at any time by destroying the Program. VUG may, at its discretion, terminate this License in the event that you fail to comply with the terms and conditions contained herein. In such event, you must immediately destroy the Program.
- Limited Warranty.** VUG EXPRESSLY DISCLAIMS ANY WARRANTY FOR THE PROGRAM AND MANUAL(S). THE PROGRAM AND MANUAL(S) ARE PROVIDED "AS IS" WITHOUT WARRANTY OF ANY KIND, EITHER EXPRESS OR IMPLIED, INCLUDING, WITHOUT LIMITATION, THE IMPLIED WARRANTIES OF MERCHANTABILITY, FITNESS FOR A PARTICULAR PURPOSE, OR NONINFRINGEMENT. ANY WARRANTY AGAINST INFRINGEMENT THAT MAY BE PROVIDED IN SECTION 2-312(3) OF THE UNIFORM COMMERCIAL CODE AND/OR IN ANY OTHER COMPARABLE STATE STATUTE IS EXPRESSLY DISCLAIMED. The entire risk arising out of use or performance of the Program remains with You, however VUG warrants the Game Pak(s), on which the Program is furnished, to be free from defects in materials and workmanship, under normal use, for a period of ninety (90) days from the date of delivery. VUG's sole liability in the event of a defective Game Pak shall be to give You a replacement Game Pak. Some states do not allow the exclusion or limitation of incidental or consequential damages, or allow limitations on how long an implied warranty lasts, so the above limitations may not apply.
- Limitation of Liability.** NEITHER VUG, ITS PARENT, SUBSIDIARIES, AFFILIATES NOR LICENSORS SHALL BE LIABLE IN ANY WAY FOR LOSS OR DAMAGE OF ANY KIND RESULTING FROM THE USE OF THE PROGRAM INCLUDING, BUT NOT LIMITED TO,

LOSS OF GOODWILL, WORK STOPPAGE, COMPUTER FAILURE OR MALFUNCTION, OR ANY AND ALL OTHER COMMERCIAL DAMAGES OR LOSSES. Some states do not allow the exclusion or limitation of incidental or consequential damages, or allow limitations on how long an implied warranty lasts, so the above limitations may not apply to you.

- Equitable Remedies.** You hereby agree that VUG would be irreparably damaged if the terms of this License were not specifically enforced, and therefore you agree that VUG shall be entitled, without bond, other security, or proof of damages, to appropriate equitable remedies with respect to breaches of this License, in addition to such other remedies as VUG may otherwise have available to it under applicable laws. In the event any litigation is brought by either party in connection with this License Agreement, the prevailing party in such litigation shall be entitled to recover from the other party all the costs, attorneys' fees and other expenses incurred by such prevailing party in the litigation.
- Miscellaneous.** This License shall be deemed to have been made and executed in the State of California, and any dispute arising hereunder shall be resolved in accordance with the law of the State of California. This License may be amended only by an instrument in writing executed by both parties. This License constitutes and contains the entire agreement between the parties with respect to the subject matter hereof and supersedes any prior oral or written agreements.

Mail: Vivendi Universal Games

Attn: Warranty Processing

4247 S. Minnewawa Ave., Fresno, CA

93725