

STAND-ALONE EXPANSION PACK

FIRST ENCOUNTER ASSAULT RECON

FEAR

PERSEUS MANDATE

18+

www.pegi.info

WHATISFEAR.COM
November 2007



© 2007 Monolith Productions, Inc. All rights reserved. Published by Vivendi Games, Inc. under license from Monolith Productions, Inc. Developed by TimeGate Studios, Inc. FEAR is a trademark of Vivendi Games, Inc. Sierra and the Sierra logo are registered trademarks or trademarks of Sierra Entertainment, Inc. in the U.S. and/or other countries. MONOLITH and the MONOLITH Logo™ & © Warner Bros. Entertainment Inc. All other copyrights and trademarks are the property of their respective owners.

S1003947

TIMESHIFT



MINIMUM SYSTEM REQUIREMENTS.....	1
RECOMMENDED SYSTEM REQUIREMENTS	1
<i>TimeShift</i> ™ INSTALLATION.....	1
WELCOME TO <i>TIMESHIFT</i> ™	2
HUD	3
SAVING AND LOADING	4
TIMESHIFTING	4
WEAPONS	4
S.S.A.M.....	7
MULTIPLAYER.....	8
CREDITS	10
TECHNICAL SUPPORT.....	12

© 2007 Sierra Entertainment, Inc. All rights reserved. Designed and developed by Saber Interactive. *TimeShift*, Sierra and the Sierra logo are either registered trademarks or trademarks of Sierra Entertainment, Inc., in the U.S. and/or other countries. GameSpy and the "Powered by GameSpy" design are trademarks of GameSpy Industries, Inc. All rights reserved. The NVIDIA logo, GeForce and "The Way It's Meant To Be Played" logo are registered trademarks or trademarks of NVIDIA Corporation in the United States and/or other countries. The Creative logo, Sound Blaster logo, X-Fi logo, EAX logo, EAX ADVANCED HD logo are registered trademarks of Creative Technology Ltd., in the United States and/or other countries. All other trademarks are property of their respective owners.

The ReadMe File

TimeShift™ has a ReadMe file where you can view both the License Agreement and updated information about the game. We strongly encourage you to read this file in order to benefit from changes made after this manual was printed.

To view this file, double-click on it in the *TimeShift* directory found on your hard drive (usually C:\Program Files\Sierra\TimeShift). You can also view the ReadMe file by clicking first on the Start button on your Windows® taskbar, then on Programs, then on Sierra, then on *TimeShift*, and then on the ReadMe file.

MINIMUM SYSTEM REQUIREMENTS

Operating System:	Windows® XP/Windows Vista™
Processor:	Intel® Pentium® 4 2.0 GHz or AMD® equivalent
Memory:	1 GB RAM
Hard Disk Space:8 GB free
DVD-ROM Drive:	8X speed or faster
Video:	NVIDIA® GeForce® 6600 128 MB with Pixel Shaders Model 2.0b support or equivalent (ATI® Radeon® X700)
Sound:	DirectX® version 9.0c-compatible sound card
DirectX:	DirectX version 9.0c (included) or higher
Multiplayer:	Internet (TCP/IP) and LAN (TCP/IP) play supported Broadband internet connection required

RECOMMENDED SYSTEM REQUIREMENTS

Processor:	Intel® Core™2 Duo E6400 / AMD Athlon™ 64 X2 4200+ RAM
Memory:	2 GB RAM
Video:	NVIDIA® GeForce® 8600 GTS with 256 MB RAM or equivalent
Sound:	Sound Blaster® X-Fi™ series sound card

An Important Note Regarding Graphics and Having the Best Possible Experience

TimeShift uses some of the most advanced rendering techniques available today for special effects and to achieve real-time performance for a great game playing experience. The game was largely developed and tested on NVIDIA® GeForce® 6 Series, 7 Series, and 8 series graphics cards, and the intended experience can be more fully realized on NVIDIA GeForce 8 Series graphics hardware. On a GeForce 8600 GTS or better, you will be able to turn on all of the NVIDIA special effect features at higher resolutions in the game.

EAX® ADVANCED HD™ is used to model reverberation effects on the 3D sounds. This allows the game to accurately model different acoustic environments and take advantage of the hardware DSP on the Sound Blaster® Audigy® and Sound Blaster® X-Fi™ series of sound cards.

TimeShift™ INSTALLATION

Insert the *TimeShift* DVD-ROM into your DVD-ROM drive. If AutoPlay is enabled, a title screen should appear. If AutoPlay is not enabled or the installation does not start automatically, click on the Start button on your Windows® taskbar, then click Run. Type D:\Setup and click on OK.

Note: if your DVD-ROM drive is assigned to a letter other than D, substitute that letter.

To install and run the game, you must have a valid key. During installation, please enter your key as it appears on the back of the manual or jewel case.

Follow the remainder of the on-screen instructions to finish installing *TimeShift*.

Once installation is complete, double-click on the *TimeShift* icon on your desktop to launch the game. You can also start the game from the Start menu by choosing Programs > Sierra > *TimeShift* > *TimeShift*.

Note: You must have the *TimeShift* game disc in your DVD-ROM drive to play.

If you purchased this game via download, simply double-click on the *TimeShift* file you just downloaded and follow the on-screen instructions. Note: you will not need to have a disc in the DVD-ROM drive to play.

TIMESHIFT™

WELCOME TO *TIMESHIFT™*

Master Time to Become the Ultimate Weapon

On the hunt to find your betrayer, Dr. Krone, you have arrived within his alternate timestream...

Master the Beta Suit's timeshifting abilities to lead the Occupant uprising to victory.

When you start the game, you will see the Main Menu, which contains the following options. Select an option to go to the submenus associated with it.

Single Player – Play a new game, resume a game, load a saved game, or replay a completed level.

Multiplayer – Play a multiplayer match over LAN or internet.

Profiles – Create or switch player profiles.

Options – Customize joystick or keyboard controls, video, audio, game, and multiplayer settings.

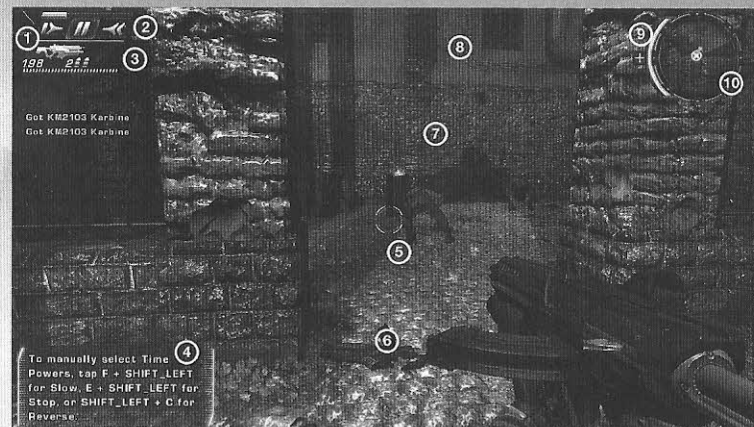
Unlockables – Browse unlocked cinematics, music tracks and production sketches. Progress through the single-player game to unlock new content.

Updates – Check for online updates.

Credits – View the game credits.

Exit Game – Exit the game.

HUD



- 1. Weapons Bar** – The integrated weapons bar displays the currently wielded weapon. In Multiplayer games, other weapons carried are displayed in smaller tabs below the currently wielded weapon. Below the picture of your current weapon is the ammunition you have for both primary and secondary fire. Note: you can toggle the Weapons Bar off through Options > Game > Weapon Bar.
- 2. Time Control Meter** – This gauge indicates how much timeshift power is left in the Beta Suit. The Slow, Stop, and Reverse icons light up when S.S.A.M. suggests using them.
- 3. Grenade Display** – This display shows the kind and amount of grenades you currently have selected. You have four to choose from, so this display can be very handy in the heat of the moment.
- 4. S.S.A.M. Hints** – S.S.A.M. Hints appear to let you know when to utilize your timeshift powers to help you conquer various gameplay scenarios. Note: S.S.A.M. Hints can be turned off through Options > Game > S.S.A.M. Hints.
- 5. Reticle** – When the reticle is green, you are aiming at an ally. When the reticle is red, you are targeting an enemy.
- 6. Use Prompt** – This will appear when you are near an object that you can use.
- 7. Damage Location** – A damage indicator will appear on-screen when you take damage. The top will illuminate when hit from the front. The right side illuminates when damage is taken from the right, left for the left side, and bottom when you take damage in the back.
- 8. Zeppelin Meter (onboard a zeppelin only)** – This gauge indicates the amount of damage your zeppelin can withstand before mission failure. The zeppelin's armor will slowly recharge if it is not attacked for a few moments.
- 9. Shield Meter** – The Beta Suit's shielding systems will automatically repair any damage taken once you take cover in a safe area.
- 10. Radar** – This displays information about your surroundings. A blue dot indicates the location of your current objective. Green dots indicate nearby allies. Red dots indicate nearby enemies. Yellow dots indicate the presence of the Quad.

SAVING AND LOADING

Save your progress at any time by pressing the "Quick-Save" key (F6 by default) or by pressing ESC to pause the game and selecting Save Game. *TimeShift* also saves automatically at predefined checkpoints. Should you die, there are multiple options to restart gameplay. Quick Load will reload your last auto or manual save and can be activated by pressing the Quick Load key (F9 by default). Load Game will bring up a menu with all the auto saves and manual saves. Lastly, Restart Level will restart your current level (using this option will start you off with a fresh inventory; your current weapons, ammo and grenades will be lost).

When you complete a level, your progress is saved automatically. You can reload any previously played level through the Replay Level option. To load a saved game, select Single Player at the Main Menu and then select Load Game. Select a saved game slot to load.

TIMESHIFTING

With the power of the Beta Suit, you are able to move through the fourth dimension. Your ability to control time enables you to do seemingly impossible things, such as walk on water or through flames. When you use a time power, everything in the world outside the Beta Suit is affected, but you are not. This means that regardless of what time power you use, you and the weapon you control are moving at normal speed.

The Beta Suit is equipped with an artificial intelligence known as S.S.A.M. that is sensitive to each context you encounter. Since S.S.A.M. can intelligently choose which time power will best aid your objective at any given moment, you are able to control all three aspects of timeshifting with one button.

Time Slow – This function slows down everyone and everything around you for a limited time. Time Slow does not affect your movements or actions—you will continue to move at normal speed while everything else moves in slow motion.

Time Stop – Time Stop allows you to completely stop time for a few brief moments, during which all molecular motion in the world stops—except for what you control. If you kill an opponent during Time Stop, the accumulated force of your gun shots will only be apparent when time resumes.

Time Reverse – This power allows you to reverse time. While reverse is in effect, you cannot use any weapon or device, take items or interact with opponents in any way without breaking the space-time continuum and canceling the effect.

TimeShift System – Using the suit's time powers will deplete the suit's energy at various rates. Once the energy is depleted, you cannot use the timeshift functions until your power is recharged. There is a finite amount of energy available in the suit, however it will recharge after several seconds when it is not in use.

Rapid Recovery System – Your Beta Suit is also outfitted with measures to protect your safety. Via its Rapid Recovery System, any damage taken by the wearer is automatically deflected by the suit's onboard shielding systems. Although the suit cannot revive you from death, any injuries you sustain will be repaired after taking cover in a safe zone for a few moments.

WEAPONS

You will find nine types of weapons and four types of grenades throughout the game. You can carry a maximum of three weapons at any time, plus every type of grenade. Guns can be acquired in weapon crates, armories, off the bodies of recently killed enemies or, with some skill, from a living foe.

KM-33

This small-caliber one-handed pistol has excellent accuracy at all distances in primary fire mode.

Primary Fire: Single Shot

Secondary Attack: 4-Shot Burst



KM 2103 Karbine

This automatic rifle fires powerful bullets at a high rate of fire and is a great all-around weapon.

Primary Fire: Rifle Round

Secondary Attack: Grenade Launcher
(hold to delay blast)



ShatterGun

This double-barreled shotgun shoots multiple pellets that spread out quickly. Use this weapon at close range for maximum effectiveness.

Primary Fire: Single-Barrel Shot

Secondary Attack: Double-Barrel Blast



Echo Rifle

This single-shot sniper rifle shoots extremely powerful large-caliber projectiles that are most effective at long range.

Primary Fire: High-Speed Sniper Round

Secondary Attack: Zoom
(hold to zoom up to 9x)



ThunderBolt

The ThunderBolt shoots energy projectiles that penetrate an opponent's armor and detonate after a short time. Its scope attachment affords extra accuracy at long distances.

Primary Fire: Energy Bolt

Secondary Attack: Scope View
(hold to zoom)



E.M.F. Cannon

This weapon uses energy cells to shoot concentrated projectiles of magnesium. A small but damaging blast radius gives it extra splash-damage capabilities at all distances.

Primary Fire: Magnesium Projectile

Secondary Attack: Magnesium Overload
(hold to charge shot)



Bloodhound

This shoulder-mounted rocket launcher is effective at long range, causes massive damage, and has a large blast radius.

Primary Fire: Rocket

Secondary Attack: Guided Fire Mode
(guide the rocket in real-time using the red reticle)



Hell-Fire

This weapon shoots incendiary bullets that ignite on impact.

Primary Fire: Incendiary Shot

Secondary Attack: Flamethrower



SurgeGun

This powerful weapon fires a concussive blast of energy with a large radius of damage.

Primary Fire: Surge Overload

Secondary Attack: Surge Lightning



Clutch Grenade

Clutch grenades adhere to enemies using electromagnetic energy. Once one sticks to an enemy, nothing will get it off. However, should you get hit with one, your time powers might help to overcome your fate.



Swarm Grenade

These grenades are actually mini attack drones. When thrown, these drones deploy in the air and hover in place, firing at nearby opponents.



Spring Mines

These proximity mines are placed in the ground when thrown. As soon as your enemy gets close, they jump out and explode.



Laser Trip Mines

These mines can be placed on many surfaces. They emit a red laser moment after being placed. When the laser beam is interrupted, the mine detonates.



Turrets

In addition to the handheld weapons and grenades, you will also find a variety of static turrets. Turrets can be used by both you and your opponents.



Quad

The quad is a vehicle you can use to get through mountain passes with ease. Look for yellow dots on your radar to find them.



Dr. Aiden Krone

Dr. Aiden Krone is a former Professor of Applied Physics. During his fifteen years, he begrudgingly taught a single graduate-level Statistical Mechanics course between his exhaustive research efforts. The motivation behind his research work was to justify and document his advancements, and therefore his seemingly endless need for concurrent research grants.

It was during this time that he hand-selected a group of his most capable grad students to document his (private) research. The studies branched across multiple fields, including Thermodynamics, Statistical Mechanics, Advanced Propulsion and, ultimately, Quantum Mechanics & Quantum Electrodynamics (QED). It was secretly dubbed the "N.E.X.T.²" program – Next-Gen Engineering for the Exploration of Time Travel. The opus of their collaborative efforts is the Suit.

The Suit

The Suit, the first being the Alpha Suit, was originally developed as the device through which a human body can safely take part in the act of Time Jumping, or "Jumping," (i.e., time travel) without being killed in the process. During the successful act of Jumping, the suit is the primary object traveling at the speed of light as it passes through any "Bridge" or wormhole (e.g., Einstein-Rosen Bridge).

The Alpha Suit was developed to shield the human body from the exponentially increasing density effects of matter as it travels at the speed of light, essentially serving as a "Time Traveling Body Shell" for the traveler. Thus, the person wearing it was simply along for the ride, hoping to survive. However, while the suit was conceived and designed with the capability to safely return to its Original Point of Exit within its "A.D." timestream, this was something the traveler was expected to initiate manually.

After over a decade of development, the Alpha Suit was the first successful, fully operational prototype of the N.E.X.T.² program. But this first suit was designed to be strictly functional and was built without the modifications necessary for practical application.

In contrast, the Beta Suit has been refined and substantially modified for military specifications. In addition to making it lightweight and sleek, its designers made use of next-gen materials and a host of classified biological technologies.

The Beta Suit is designed to integrate with the inner workings and design of the human body. When functioning properly, the two "systems" are married – together they form a fully operational tactical system.

The Beta Suit also addresses the potential dangers of the Alpha's manual return system. With the manual return, once the wearer made a Jump in time, it was up to him to initiate the return, which left open the possibility of the wearer remaining at the destination coordinates forever—whether by accidental circumstance or even on purpose. With an Auto-Return system, the traveler's suit will course-correct. Assuming it can respond in time, the suit will automatically reverse its Jump pathway out of the destination coordinates and Auto-Return the wearer to the A.D. coordinates.

Similarly, many of the suit's functions are automated. This leads us to S.S.A.M....

S.S.A.M.

Along with the inclusion of the Auto-Return System, chief among the many improvements to the Beta Suit was the integration of a prototype Artificial Intelligence program. The Strategic System for Adaptable Metacognition, known affectionately as S.²A.M. or S.S.A.M., is a significant addition to the suit's capabilities.

While the S.S.A.M. program has been researched and developed over the course of the past ten years, the program is still in its infancy as a self-learning and fully adaptable AI program.

In addition to all the known and implied characteristics of an Artificial Intelligence system, S.S.A.M. also has the unique ability to intercept and record every digital audio and video feed within the system's pre-set proximity.

It was thought that the experience of a Jump would be severely jarring to a traveler's body, motor skills and senses—so much so that it could be life-threatening. The stored A/V information can be used in many ways; however, the intended purpose was to enable S.S.A.M. to play audio clips, video snippets—at times, even memories—to familiarize weary and possibly shocked travelers of their mission goals, history and purpose.

Additionally, S.S.A.M. is meant to regulate the Beta Suit's internal systems, monitor all electrical diagnostics, and manage the wearer's central nervous system, vital signs and neurological status.



Dr. Marissa Foster

Dr. Marissa Foster is a beautiful, brilliant student who was one of the first to join Krone's graduate research program. Marissa is Dr. Krone's "second" within the facility and is largely responsible for the development and advancement of the Beta Suit, as well as the creation and integration of S.S.A.M.



Dr. Nathan Tucker

Dr. Nathan Tucker is another colleague on the N.E.X.T.² program. He serves as the conservative voice of reason regarding the serious and unpredictable implications of the program's success.



Commander Mason Cooke

Commander Mason Cooke is the leader of an anti-Krone underground movement. Because the two of you have a common goal – to find and take down Krone – you join Cooke and his men, known as the Occupants, in their failing struggle against the Krone Magistrate.

MULTIPLAYER

Ready to take your game to the next level? Play *TimeShift* with a friend over LAN and battle it out for bragging rights. Ready to take on the world? Take *TimeShift* online and compete with the world's best to become the true King of Time.

The Multiplayer Menu

After selecting Multiplayer from the Main Menu, the following options are available:

Host Game: Create a multiplayer game for others to join.

Join LAN Game: Join a multiplayer game created for a Local Area Network.

Join Internet Game: Join a multiplayer game created on the Internet.

Direct Connection: Enter the IP address to directly connect to a game.

Multiplayer Gameplay

Chrono Grenades — Use time as a weapon like never before. During multiplayer gameplay, players can throw Chrono Grenades to create spheres that distort the temporal fabric. When a Chrono Grenade is thrown, any player, weapon or projectile caught in the blast radius is affected. There are three types of Chrono Grenades: Slow, Stop and Reverse. Slow Chrono Grenades slow down anything caught in their blast radius. Stop Chrono Grenades nearly stop everything caught in the way. Time Reverse Grenades reverse time within their area of effect.

You can replenish Time Energy by letting your suit recharge, or you can speed up the process by collecting Time Energy Packs strewn across the multiplayer maps.

Time Shield — Using your Time Energy, you can activate a Time Shield around you that slows foreign objects and makes you immune to time manipulation.

Time Resistance — By locating Time Resistance power-ups, you can become resistant to the effects of Chrono Grenades for a short period of time. After obtaining a Time Resistance, a timer will appear on the bottom left of the screen to tell you how long the effect will last.

Heavy Damage — Heavy Damage — By collecting a Heavy Damage power-up, you can increase the damage your weapons inflict 2x. These power-ups appear as floating swords throughout the maps. After obtaining a Heavy Damage power-up, a timer will appear on the bottom left of the screen to tell you how long the effect will last.

Multiplayer Options — To customize Multiplayer Options, select Options from the main menu and then select Multiplayer. You can edit your multiplayer Skin, create Modifiers and adjust Game Modes for online play.

Multiplayer Game Modes — *TimeShift* comes with six predefined Game Modes, and each can be modified to create new game modes. Select Edit in the Gameplay Settings menu to customize everything from armor values and starting weapons to Chrono Grenades. Try creating your own game types to mix things up on the battlefield. Be creative!

Predefined Game Modes

Deathmatch — Every man for himself.

Team Deathmatch — The team with the most kills wins.

King of Time — Grab the Time Sphere and become impervious to all time effects. Rack up kills while holding the Sphere to become the King of Time!

Meltdown Madness — Throw Chrono Grenades at the opposing team's machine to prevent it from functioning. Your team wins when your machine completes its countdown.

Capture the Flag — The old favorite gets a new spin when you mix in Chrono Grenades.

One-on-One — A one-on-one battle to the death!

Server Settings

After selecting a Game Mode, you can specify the server settings. You can set the maximum amount of players, set spectator slots, set a password to make the game private and more.

Multiplayer Modifiers

After selecting a Game Mode and specifying the Server Settings, you can select optional Server Modifiers. Modifiers add unique twists to basic gameplay. Like Game Modes, Server Modifiers are completely customizable. Create new modifiers by tweaking Health properties, Time Energy regeneration, bonus powerups for kills and even physics!

Presets

Athletic — Increase your run speed and improve your jumping abilities.

Low Gravity — That's it. Jump high, fall soft, have fun.

One Shot, One Kill — Enemies will die from a single shot. But so will you.

Rocket Arena — No hiding, no running. All weapons are changed to Bloodhounds.

Slow to Kill — Use your time control skills to affect your enemies. It's the only way to take them down.

Sniper Arena — Test your marksmanship skills. All weapons are changed to Echo Rifles.

Steel Skin — Players' resistance to damage is increased.

Vampire — You are a vampire. Go on a killing spree to survive.

Last Man Standing Classic — You have a limited number of lives. Stay alive to become the last man standing.

Stat Icons



Server requires a password



Player is dead



Killing Spree Award



Dedicated Server



Double Kill Award



Killing Rage Award



Server with modifiers



Hat-Trick Award



Untouchable Award



Server with customized modifiers



Quad Kill Award



Mass Murder Award



King of Time



Fury Kill Award



Grim Reaper Award

Credits

SABER INTERACTIVE

GAME DESIGN & ORIGINAL CONCEPT

Matthew Karch

PROJECT LEAD

Andrey Jones

ENGINE LEAD

Anton Krupkin

ART

Vladimir Chernysh
Dmitry Kholodov
Petr Kudryashov
Anton Lomakin
Alexander Myala
Sergey Boginsky
Evgeny "Floxer" Davydenko
Vitaly Anikin
Fedor Gullimoutdinov
Yury Chernysh
Andrey Kholodov
Pavel Baryshnikov
Vladimir Mitsov
Elena Bondareva
Tatyana Pushkareva
Eugeny Fokin
Veronika Koshnenkova
Elena Lesakova
Olga Cheremissova
Andrey Kalukin
Valentin Sergeev
Vladimir Tretakov
Alexander Kuznetsov
Elena Tarnovskaya
Nadezhda Oryol
Anna Starchenkova
Eugeny Dybchinsky
Dmitry Volkov
Vladimir Nenov
Artyom Shumnik
Anton Tretyakov
Grigory Gladikh
Ilya Avakov
Tsekhanskiy Kostya

SOUND DESIGN

Pavel Grachev
Dmitriy Milyavsky

PROGRAMMING

Andrey Gngonov
Sergey Mironov
Victor Streltsov
Pavel Kuznetsov
Stanislav Zainchikovskiy
Roman Lebedev
Ruslan Vizgalin
Denis Sladkov
Alexey Bezgodov
Alexander Skolnikov
Evgeny Cimbalyuk
Mikhail Goroshkov
Pavel "Askold" Rusin
Sergey Avdeyev
Alexey Ivanov
Denis Kravtsov
Artyom Palveev
Vasily Vishnevetskiy
Mikhail Rybakin
Mikhail Kozhevnikov
Pavel Safronov
Andrey Horikov
Petr Malkin
Alexey Vlasov

SCRIPTING

Sergey Larionov
Alexander Larionov
Sergey Krainy
Alexander Torbin
Nikolay Akimov
Georgiy Belyaev
Andrey Grumad
Kirill Dyshkant
Eugeny Yakhin

INTERNAL QA

Kirill Morozov
Ivan Yakovlev
Mikhail Davydenko
Filipp Ivanov

SUPPORT

Rick Raymo
Ben Serviss
Anna Naleushkina
Victoria Gusakova
Sergey Tuchkin
Victor Stupko
Maria Korobkina
Igor Herzev

VOICE TALENT

Greg Grunberg
Mary Chris Wall
Dave Wittenberg
Brian Bloom
Mel Fair
John DiMaggio

Andrew Kishino
S. Scott Bullock
Enn Reilal
David Sobolov
Scott MacDonald
Maury Sterling
Michael Ralph
Peter Jessop
Ron Yuan
Armando Valdes-Kennedy
Tim Harrison
David Markus
Keith Ferguson
Kevin Glikmann
Jake Eberle
Sean Donnellan
Krista Swan
Cameron Patatas

MUSIC

Music by Rebecca Kneubuhl
and Gabriel Mann
Guitars: Steve Mazur
Vocals: Rebecca Kneubuhl &
Gabriel Mann

STORY & SCRIPT

Michael McCormick Hall

HOUSE OF MOVES

Scott Gagin
Gary Roberts
Chris Bellaci
Amy Calcote
Greta Anderson
Jenny Villagomez
Sean Stanek
Andre Lopez
Andre Petrossian
Vince Argentine
Tricia Barrett
Nikola Dupkanic

DIFORMA

Anton Vereschagin
Anton Linzbach
Evgeny Dybchinsky
Vitaly Tev
Vasily Dovbysh
Maxim Nezvanov
Sergey Nikolaev
Oleg Fomenko
Arseny Turgulaynen
Ira Sazonova
Georg Medovnikov
Oleg Muranov

DRAGONFLY

Alex Penkov
Larisa Kucherenko
Andrew Lazarev
Irina Evmenova
Julia Boyarintseva
Antony Tolchanov

MAIN ROAD

Arman Yakhin
Andrey Stremousov
Elena Pozhilova
Sergey Alibekov
Mikhail Lyossin
Timur Hairulin
Alexey Zaitsev
Dmitriy Stolyar
Elvir Sharifullin
Konstantin Yablonskiy
Pavel Ledin
Timur Khodzhaev
Vladimir Tkachenko
Margarita Gurieva
Dmitriy Tokoyakov
Konstantin Fedorov
Vladimir Orel
Ilya Shutov
Oleg Dymov
Ruslan Timerbaev
Vladimir Sotnikov

LOCALISATION TEAM

Bobby Henderson
Ethna Hagan
Paul Murray
Yvonne Costello
Veronika Mang
Liam Rüdel
Sean Pascal Niermeyer
Yannick Pichon
Antoine Laure
Fortunato 'Bob' Macari
Gorka Sola Barleycorn
Emanuel Munos
Mirco Bortolozzo
Luca Contigiani
Paul Lopez
Marc Delamontagne
Karol Costello
Heberto Rios
Gianpaolo Arzano
Jonas Stoecker

LOCALISATION TRANSLATION & AUDIO RECORDING

France : Evocati - Hifi-Génie
Germany : DAS TEAM/locatrans
Italy : Jinglebell Communication s.r.l.
Spain : GameLoc Localisation
Services, S.L. Luca Contigiani

GLOBAL TEAMS

VP International Marketing
Chloe Rothwell
Global Brand
Coordination Manager
Deana Erickson
International
Marketing Manager
Thomas Seris
Executive VP & General
Manager Europe
Xochitl Balzola Widmann
Supply Chain Product Manager
Erika Thiong-Soul-Ho
Publishing Director
Annick Decrop
European Publishing
Coordinator
Eric Chatelet
Operations Deputy Director
Fabien Tisla
Legal Manager
Emmanuel Dresch
Market Intelligence
Gregoire Gabalda

AUSTRALIA

General Manager
Colin Brown
Product Manager
Arbie Artinian

ITALY

General Manager
Benoit Boutte
Marketing Manager
Sara Cantoni
Product Manager
Stefano Bertuzzo
P.R. Manager
Simone Isella

SPAIN

General Manager
Frederic Hosteins
Marketing Manager
Emilie Pujol
Product Manager
Alejandro Fernandez
P.R. Manager
Sara Fernandez

BENELUX

General Manager
Jeroen Smit
Marketing Manager
Olivier Spaargaren

UNITED KINGDOM

Marketing Manager
George Georgiou
Senior Product Manager
Scott Wood
Senior P.R. Manager
Cat Channon
P.R. Manager
Jonnie Bryant

FRANCE

General Manager
Julie Chalmette
Marketing Manager
Thomas Painçon
Product Manager
Olivier Reocreaux
P.R. Manager
Clément Debattz

GERMANY

Executive VP & General
Manager Europe
Xochitl Balzola Widmann
Marketing Manager
Frank Weber
Product Manager
Robert Hausler
P.R. Manager
Tim Ende-Styra

NORDIC

General Manager
Camilla Anger
Sales & Marketing Manager
John Hall
Product Manager
Jonas Christensen
P.R. Manager
Tom Lindgren

Technical Support

Vivendi Games Ltd take every care to ensure that our customers are treated in a professional manner and are dealt with in a way in which they deserve. If you find that you have a technical problem with one of our titles and you need assistance, please call the relevant number for your country with the following details to hand:

PC make and model
Graphics and Sound Card make and model
Graphics and Sound Card driver version
Operating System
Direct X Version
System Ram

You can also send us an email anytime, which will be processed within 36 hours. Please include the above information and refrain from sending in ANY attachments, as these cannot be accepted by our Technical Support.

French, German, and Spanish language customers can also make use of our online database and FAQ available 24 hours under the site address detailed below.

In the unlikely event that you find a fault with one of our products, please return the title to the retailer where it was purchased for a full product exchange. Please refer to your local retailer for the conditions governing the exchange of purchased products.

United Kingdom

+44 (0) 871 0752621

Calls are charged at 0.10 GBP per Minute

Mailto: uksupport@vgames.com

<http://www.sierra.com/uk>

Opening Hours are 1200-2100 Monday – Sat
(Central European Time)

Republic of Ireland

+353 (0) 1530 935001

Calls are charged at 0.33 Euro per Minute

Mailto: uksupport@vgames.com

<http://www.sierra.com/uk>

Opening Hours are 1200-2100 Monday – Sat
(Central European Time)

Spain

+34 902-888498

Calls are charged at 0.08 Euro per minute +
0.10 Euro per call

Mailto: spsupport@vgames.com

<http://www.sierra.com/sp>

Opening Hours are 1200-2100 Monday – Sat
(Central European Time)

Operations/Sales contact for retailers: Sales
Department

mailto:marta.espinar@vgames.net

+34 91 735 5502

France

+33 892 880240

Calls are charged at 0.34 Euro per minute

Mailto: frsupport@vgames.com

<http://www.sierra.com/fr>

Opening Hours are 1200-2100 Monday – Sat
(Central European Time)

Germany

+49 0900 1 151200

Calls are charged at 0.62 Euro per minute

Mailto: gesupport@vgames.com

<http://www.sierra.com/de>

Opening Hours are 1200-2100 Monday – Sat
(Central European Time)

Please send your letters to the following
address:

Vivendi Games Deutschland GmbH

Tec-Park 1

Fraunhoferstrasse 7

85737 Ismaning

Belgium

+32 (0) 900 40458

Calls are charged at 0.45 Euro per minute

Mailto: frsupport@vgames.com

<http://www.sierra.com/fr>

Opening Hours are 1200-2100 Monday – Sat
(Central European Time)

Austria

+43 (0) 900 241234

Calls are charged at 0.676 Euro per minute

Mailto: gesupport@vgames.com

<http://www.sierra.com/de>

Opening Hours are 1200-2100 Monday – Sat
(Central European Time)

Luxembourg

+352 900 43105

Calls are charged at 0.24 Euro per minute

Mailto: frsupport@vgames.com

<http://www.sierra.com/fr>

Opening Hours are 1200-2100 Monday – Sat
(Central European Time)

Switzerland

+41 (0) 900 480485

Calls are charged at 1.00 CHF per minute

Mailto: gesupport@vgames.com

<http://www.sierra.com/de>

For French speaking territories please refer to
French Customer Support

Opening Hours are 1200-2100 Monday – Sat
(Central European Time)

The Netherlands (English Language Only)

+31 (0)900 6464123

Calls are charged at 0.25 Euro per Minute

Mailto: uksupport@vgames.com

<http://www.sierra.com/uk>

Opening Hours are 1200-2100 Monday – Sat
(Central European Time)