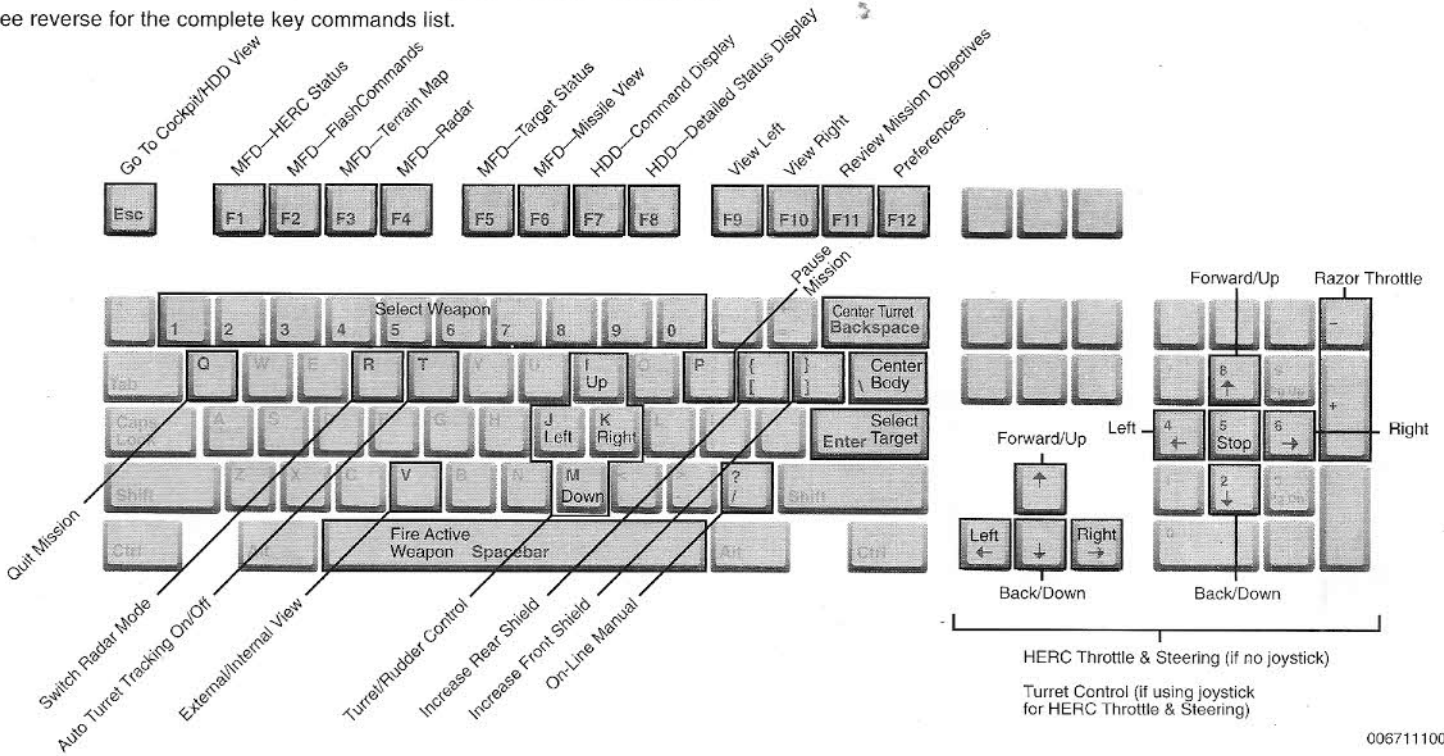


BASIC KEYBOARD COMMANDS

See reverse for the complete key commands list.



00671100

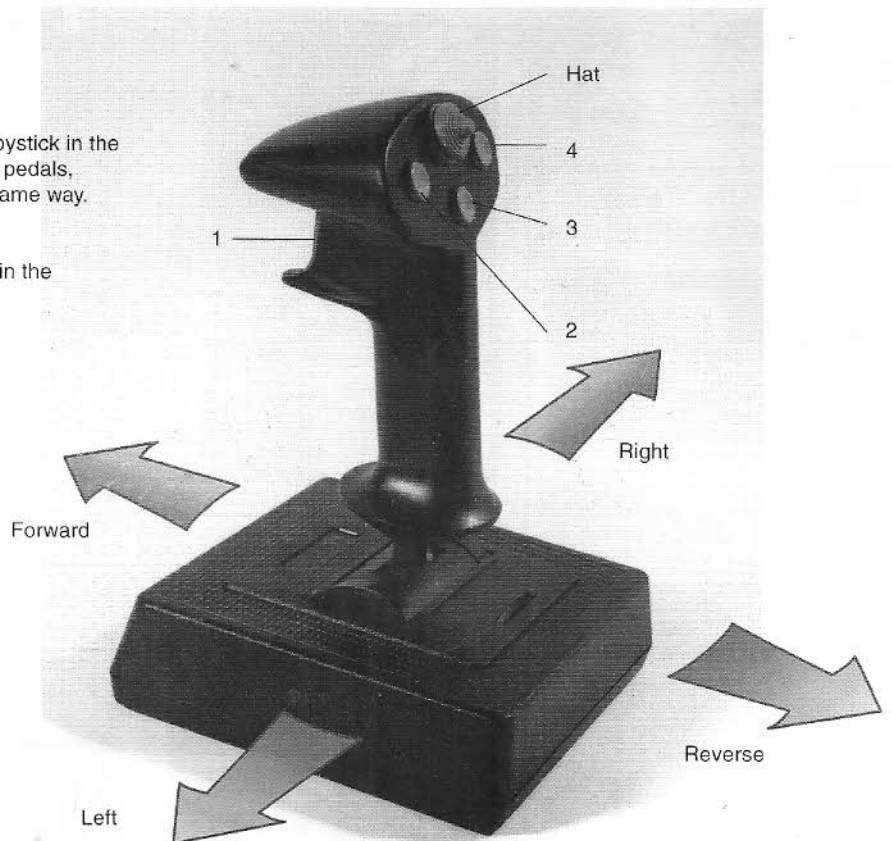
JOYSTICK CONTROLS

Calibration: In Windows 95, you enable and calibrate your joystick in the Control Panel. If you have additional control devices (rudder, pedals, WCS, etc.), they will need to be setup and calibrated in the same way. For Windows 3.1 joystick setup, see the README.

Once the joystick is enabled, select joystick button functions in the Simulations Preferences: Controls screen F12.

Recommended Settings:

Joystick:	HERC Movement
Throttle:	Throttle
Rudder:	Turret Rotate/Rudder
Hat:	Views
Button 1 (Trigger):	Fire Weapon
Button 2:	Target
Button 3:	Center Turret
Button 4:	ATT on/off
Button 5:	Next Chain
Button 6:	Next Weapon
Button 7:	Shields Front
Button 8:	Shields Rear



CH Flightstick Pro® shown

COMPLETE KEYBOARD COMMANDS

These are the default control settings for *EarthSiege 2*. You may customize many of these in the Simulation Preferences: Controls screen **F12**.

MENUS

Cancel **Esc**
 Next Button **Tab**
 Select Item **Enter**
 Previous/Next Item Up/Dn **Arrow**

COCKPIT

Joystick HERC Control

HERC Steering, Throttle Joystick
 Turret Control **Arrow** Keys
 or I/M, J/K Keys

Keypad HERC Control

HERC Steering R/L **Arrow** Keys
 HERC Throttle Up/Down **Arrows**
 Turret Control I/M, J/K Keys
 Razor Rudder J/K Keys

Center Turret **Backspace**
 Center Body ****
 View Left **F9**
 View Right **F10**
 Go to Cockpit/HDD view **Esc**

EXTERNAL VIEW

External/Internal View **V**
 Camera/HERC Control **Enter**
 View Next HERC **N**

WEAPONS

Fire Active Weapon **Space**
 Select Target **Enter**
 Nearest Target **.**
 Auto Turret Tracking On/Off **T**
 Target Pod Aim **Tab**
 Select Weapon **1 ... 0**
 Next/Prev. Weapon **W / Alt+W**
 Link Weapon **L**
 Add/Remove Weapon in Chain **Alt+1...0**
 Next Chain **~**
 Switch Radar Mode **R**
 Set Scan Range **Alt+R**
 Increase Rear Shield **[**
 Increase Front Shield **]**

DISPLAYS

HERC Status **F1**
 FlashCommands **F2**
 Terrain Map **F3**
 Radar **F4**
 Target Status **F5**
 Missile View **F6**
 HDD-Command Display **F7**
 HDD-Detailed Status Display **F8**

FLASHCOMM

Send Message **Alt+Hot Key**
 Attack My Target **A**
 Ignore My Target **G**
 Help Me Out **H**
 Join On Me **O**
 Scan/Emcon **C/E**
 Fire At Will/Check Fire **F**
 Prev./Next Message **, / .**
 XMIT (Send Message) **X**

COMMAND DISPLAY

View Command Display HDD **F7**
 Scroll Map **Arrows**
 Zoom Map In/Out **+ or -**
 Select Pilot **1 ... 3**
 Prev./Next Message **, / .**

Disengage **D**
 Attack Enemy **A**
 Defend Position **F**
 Patrol Gridpoint **T**
 Go To Gridpoint **G**
 Join on Me **O**
 Scan for Hostiles **C**
 Emcon **E**
 XMIT (Send Message) **X**
 Cancel **Backspace**

DAMAGE DETAIL

View Damage Detail HDD **F8**
 Select HERC **L/R Arrow**
 Structural **S**
 Internal **I**
 Weapons **W**

MISC.

On-Line Manual **? key or button**
 Pause Mission **P**
 Review Mission Objectives **F11**
 Quit Mission **Q**
 Simulation Preferences **F12**
 Quit *EarthSiege 2* **Ctrl+Q**

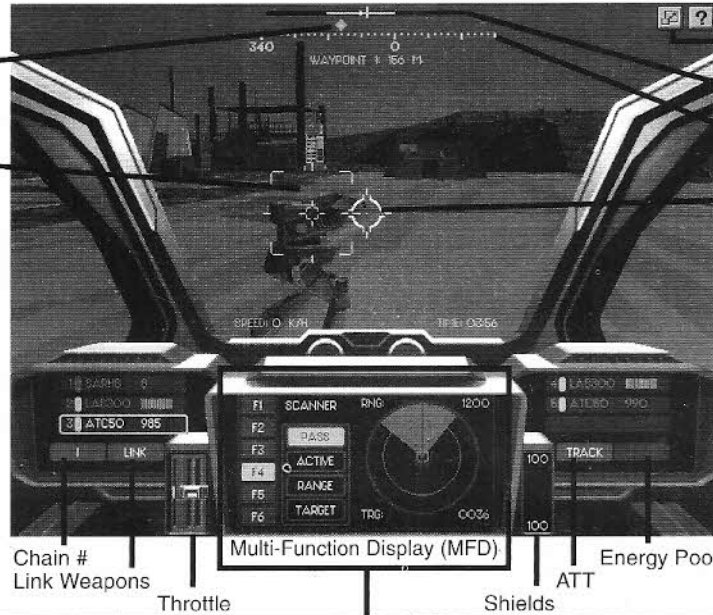


© and TM designate trademarks of, or licensed to, Sierra On-Line, Inc. © Sierra On-Line, Inc. 1996. All rights reserved. Printed in the USA.

HEADS UP DISPLAY (HUD)

Waypoint Indicator

Target Box



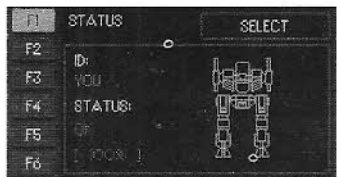
On-Line Manual
 Screen Resize

Rotation Indicator

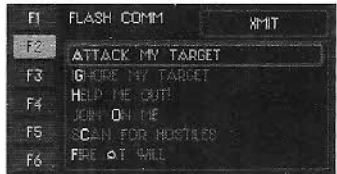
Heading Indicator

Aiming Reticle

MULTI-FUNCTION DISPLAYS (MFD)



HERC Status **F1**



FlashCommands **F2**

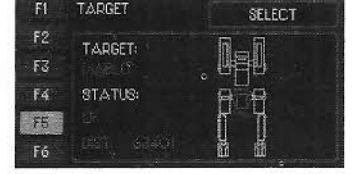


Terrain Map **F3**

MULTI-FUNCTION DISPLAYS (MFD)



Radar **F4**

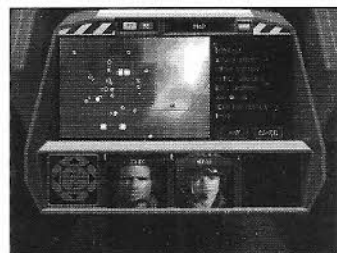


Target Status **F5**



Missile View **F6**

HEADS DOWN DISPLAYS (HDD)



Command Display **F7**



Damage Detail Display **F8**