

NOW WITH
UNLIMITED MILEAGE

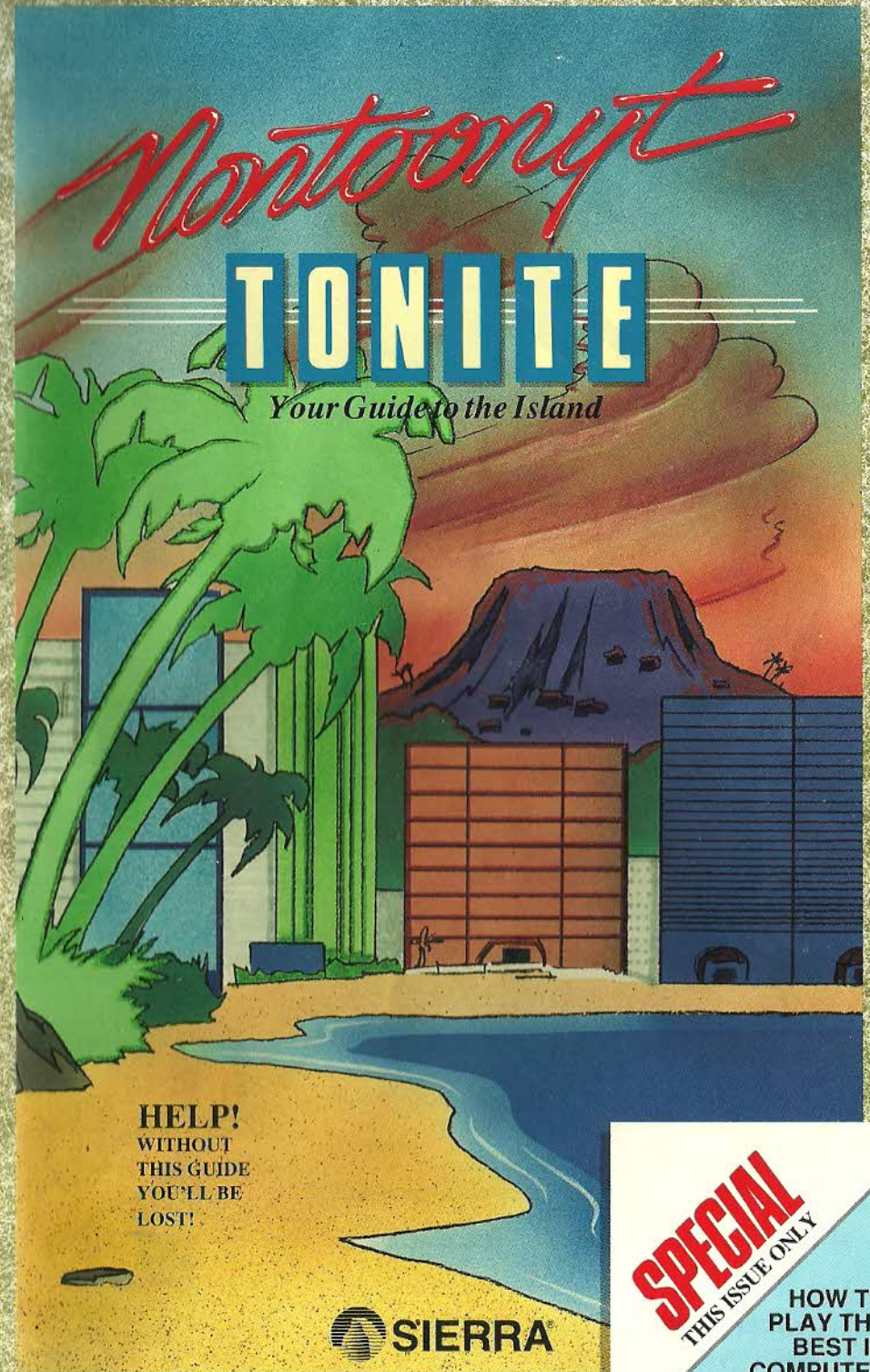
Hurtz

RENT-A-BIKE



THE ONLY WAY TO EXPLORE THE ISLAND!

*In the Beautiful Downtown
Nontoonyt Mall*



**HELP!
WITHOUT
THIS GUIDE
YOU'LL BE
LOST!**

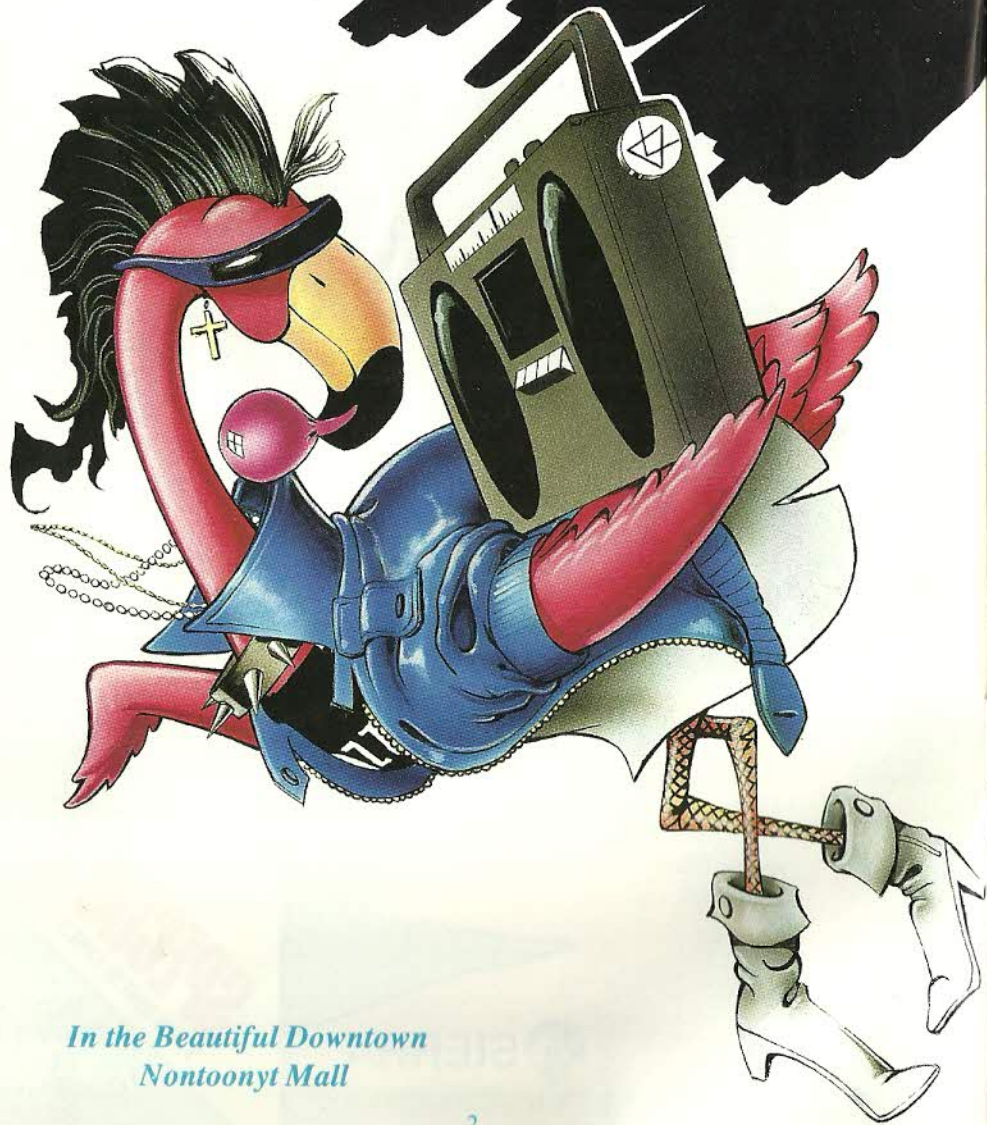


SPECIAL
THIS ISSUE ONLY

**HOW TO
PLAY THE
BEST IN
COMPUTER
GAMES!**

Dance Your Grass Off
at

THE PUNK FLAMINGO DISCO



In the Beautiful Downtown
Nontoonyt Mall

Nontoonyt

TONITE

Your Guide to the Island

FEATURES

How to Read This Manual	5
Getting Started	5
MS-DOS	
Installing and Loading	6
Saving Games	7
ATARI ST	
Installing and Loading	9
Choosing a music device	10
AMIGA	
Installing and Loading	12
HOW TO PLAY	
Moving Your Character	13
Menus / Keys to Use in the Menus	13
Game Speed Control	13
Short Cuts for Common Commands	14
Using Your Tab Key	14
Using the Mouse	15
Examples of Common Commands	15
A Walking Tour of Nontoonyt	20
Need a Hint?	20
Problem Disk?	22

DEPARTMENTS

Going Native with Uncle Carlos	6
Beach Watch with Billi the Beachcomber	8
Personals	8
Community Calendar	9
Dining Out Guide	11
The Local Entertainment Scene	14
Off the Beaten Trail	19



**PLEASE
DO NOT MAKE ILLEGAL
COPIES OF THIS SOFTWARE**

The software you are using was produced through the efforts of many people: designers, artists, programmers, distributors, retailers and other dedicated workers.

The costs of developing this and other software programs are recovered through software sales. The unauthorized duplication of personal computer software raises the cost to all legitimate users.

This software is protected by federal copyright law. Copying software for any reason other than to make a backup is a violation of law. Individuals who make unauthorized copies of software may be subject to civil and criminal penalties.



as a member of the Software Publishers Association (SPA), supports the industry's effort to fight the illegal copying of personal computer software.

Report copyright violations to:
**SPA, 1101 Connecticut Avenue, NW, Suite 901
Washington, DC 20036**

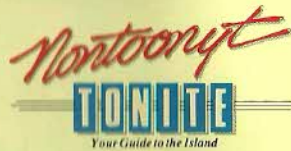
LIMITED WARRANTY NOTICE

Sierra On-Line, Inc. wants your continued business. If you fill out the enclosed product registration card and return it to us, you are covered by our warranty. If your software should fail within 90 days of purchase, return it to your dealer or directly to us, and we will replace it free. After 90 days, enclose \$5 for 5.25" disks (or \$10 for 3.5" disks) and return the software directly to us. Sorry, without the registration card you are not covered by the warranty. This warranty gives you specific legal rights, and you may also have other rights which vary from state to state.

COPYRIGHT NOTICE

This manual, and the software described in this manual, are copyrighted. All rights are reserved. No part of this manual or the described software may be copied, reproduced, translated or reduced to any electronic medium or machine-readable form without the prior written consent of Sierra On-Line, Inc., P.O. Box 485, Coarsegold, CA 93614

Sierra is a registered trademark of Sierra On-Line, Inc. Copyright Sierra On-Line, Inc. 1989. Printed in the U.S.A.



Leisure Suit Larry 3: Passionate Patti in Pursuit of the Pulsating Pectorals!

Producer

Al Lowe

Designer

Al Lowe

Programmers

Al Lowe

Carlos Escobar

Graphics Artists

William Skirvin

Roger Hardy

Sierra's Creative Interpreter

Jeff Stephenson

Bob Heitman

Pablo Ghemis

Stuart Goldstein

Music composed and performed by

Mike Dana

Sound Effects

Rob Atesalp

Music Conversions

Rob Atesalp

Atari ST Translation

Robert Lindsley

Amiga Translation

Robert Lindsley

Macintosh Translation

by Bye

Quality Assurance Leader

Robin Bradley

Cover Art

Mark Crowe

Cover Photography

Keith Seaman/Camerad

Executive Producer and Best Boy

Ken Williams

"Nontoonyt Tonite"

Documentation

Marti McKenna

Bridget McKenna

Design and Production

Greg Steffen

Illustrations

Bill Eaken

HOW TO READ THIS MANUAL

Throughout this manual we will use the following ways of representing information:

MENU COMMANDS
will be CAPITALIZED.

Example:

SAVE, RESTORE, QUIT, PAUSE

TYPED COMMANDS
will appear as BOLD TYPE.

Example:

'type: [example game command]'

'type: cd \sierra'

Portions of the command line **not** meant to be typed will **not** appear in bold type. For example, in the line 'type: cd \sierra', 'type:' should **not** be typed.

[example text] and [Keystrokes] will appear in brackets setting them off from the surrounding text.

Example:

[object], [character], [Spacebar], [Tab], [PageUp]

The brackets are not keystrokes and should not be typed.

Two or more keys that should be pressed at the same time will be separated by a hyphen (-). This hyphen is not a keystroke, and should **not** be typed.

Example:

'Press [CTRL-I] to view your inventory.'

If a space appears between parts of a command, it is meant to be typed.

Example:

'type: cd \sierra' (the space between cd and \sierra should be typed as part of the command)

The term 'diskette' is used to refer to either 3.5" or 5.25" data storage disks.

ALL SYSTEMS

GETTING STARTED: DISKETTE DRIVES

It is always advisable to make back-up copies of your master program diskettes to increase the life of the masters and guard against accidents. Follow your computer's instructions to make copies of all game diskettes.

If you will be playing from diskettes rather than a hard disk, you will also want to format a blank diskette for saving games. **In fact, saving games to diskettes is a good idea, even if you are playing the game from your hard disk.** Follow your computer's instructions to format a blank diskette and keep it handy for saving your game as you play. For some helpful tips on saving games, see the 'Saving Your Game' (Page 11) section of this manual.

When installing your program, you may be prompted to insert a 'Drivers' disk. If you receive this prompt, please examine your disks and insert the disk marked 'Drivers' and press [ENTER], so that the appropriate drivers will be loaded. Some games do not include a separate 'Drivers' disk.

55811
NANTOONYT
ADMIT ONE
SHOW PASS
55811

