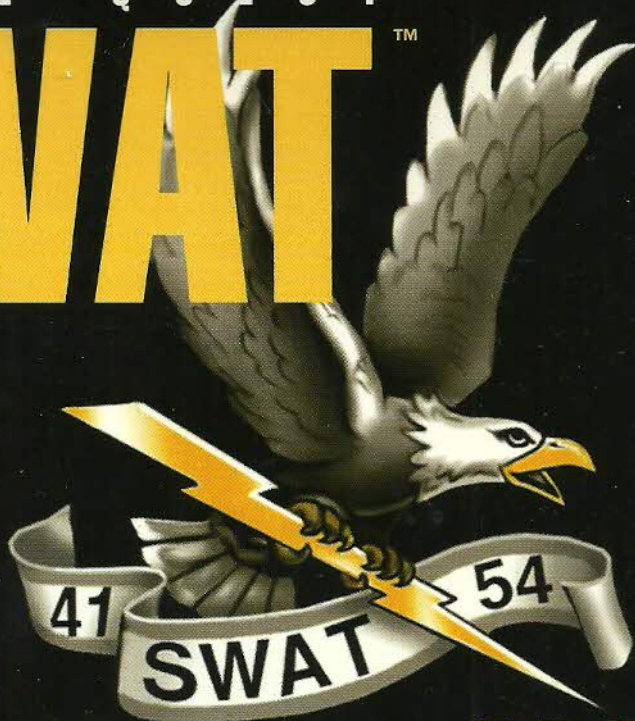


© 1995 Sierra On-Line, Inc. ® and/or ™ designate trademarks of, or licensed to
Sierra On-Line, Inc. All rights reserved. Bellevue, WA 98007, U.S. Patent Nos.
5,287,446; 5,425,139; 5,430,835; and 5,377,997. Other U.S. and Foreign Patents
Pending.
002741000

SIERRA

DARYL F. GATES'
POLICE QUEST®

SWAT™



TECHNICAL
MANUAL

INTRODUCTION	2	Alert/LASH Button	8	Small Arms	15
INSTALLATION	2	Alert	8	The Selector Lever	16
Windows	2	LASH	9	The Pact Timer	16
Windows® 95	2	Assaulter LASH	9	Reloading	16
DOS	3	Element Leader LASH	9	Leaving the Range	17
THE ICON BAR	3	THE INTERFACE	10	Combat	17
Information Button	3	Cursors	10	The Drills	18
SWAT Logo Graphic	3	Directional Arrows	10	Reloading	18
Assaulter Graphic	4	Space Bar	10	Leaving the Range	18
Sniper Graphic	4	PLAYING THE GAME	11	Angeles Range	18
Hand Signals	4	Main Menu	11	First Training Session	18
Interface Box	4	Careers	11	Data Book	19
Inventory Panel	4	New Career	11	Zeroing the Rifle	19
Hand Signals Panel	5	Previous Career	12	Subsequent Training Sessions	20
Room Entry Panel	6	Control Panel	12	Sniper Qualification Test	21
Control Panel Button	7	Credits	12	CALL-UPS	21
Save Mission	7	Quit	12	Grease Board	22
Restore Mission	7	Metro Division	12	DATA BOOK CHARTS	23
Play	8	Tactical Education	12	TECHNICAL SUPPORT/SALES	32
Quit	8	Interactive Profiles	13	HINTS	33
Sierra Logo	8	Travel Map	14	NO-RISK GUARANTEE	34
Question Mark	8	SHOOTING RANGES	14	WARRANTY	34
Sliders	8	Gear Galleries	14	CREDITS	35
		Police Academy Range	15		





INTRODUCTION

Welcome to *Police Quest: SWAT*. As the newest member of LAPD's Special Weapons and Tactics team you're about to find yourself in the thick of urban turmoil. Successfully resolve these civic conflicts and you'll be awarded with medals and career advancement. Promote to the position of Element Leader and it will be your turn to call the shots. If sharpshooting interests you, train and attempt Qualification. Pass and you'll be eligible to be called up as a sniper.

Remember, *SWAT* is founded on a team concept and it will be up to you to play by the rules. To do just that read the following information contained in this manual. Become familiar with *SWAT*'s interface and what to expect on the shooting ranges, training sessions and during call-ups.

INSTALLATION

WINDOWS INSTALLATION

1. Put the *SWAT* CD disk #1 into your computer's CD-ROM drive.
2. Start Windows™.
3. Click on [File].
4. Select [Run].
5. On the command line, type the letter of your CD drive followed by \SETUP. For example, if the letter of your CD drive is "D", type D:\SETUP and press the [Enter] key on your keyboard.
6. Follow the on screen instructions.
7. Once the game has been installed, you will have the option of reading the "Read Me" file. This file contains all the latest information about *SWAT*, including compatibility issues discovered during testing.

8. After installation of the game you will be given the opportunity to register your product via modem. This is the best way to make sure you receive the latest updates on Sierra's products, and a free subscription to *InterAction* Magazine, Sierra's own quarterly magazine.

WINDOWS® 95 INSTALLATION

1. Start Windows® 95.
2. Put the *SWAT* CD disk #1 into your computer's CD-ROM drive.
3. Appearing on the computer screen will be the question, "Do you wish to install *SWAT* at this time?" Click on the "Yes" button underneath the question.
4. Follow the on screen instructions.

DOS INSTALLATION

If during the Windows installation you received a message suggesting you should run *SWAT* in DOS, or you prefer to run your games in DOS, follow these installation instructions.

1. Put the *SWAT* CD disk #1 into your computer's CD-ROM drive.
2. Change to the CD-ROM drive by typing the letter that corresponds to your CD-ROM drive, followed by a colon. For example, if the letter of your CD-ROM drive is "D", type D: then press the [Enter] key on your keyboard.
3. Type the word "Install" and then press the [Enter] key on your keyboard.
4. Follow the on-screen installation instructions.

THE ICON BAR

The Icon bar is the panel at the bottom of the screen. Its appearance and functionality depend on your location in the game. The Icon bar consists of the following features:

- Information/Travel Button
- Interface Box with four sides, featuring:
 - Cover Panel
 - Inventory Panel
 - Hand Signals Panel
 - Room Entry Panel
 - Control Panel Button
 - Alert/LASH Button

These features are described below in more detail.

INFORMATION/ TRAVEL BUTTON

The Information button is located on the left side of the Icon bar. Depending on where you are in the game, clicking this button will call up travel options or crisis scenario information. You will also view hand signals in this window. The button's functionality at any given time is depicted by one of three graphics. These graphics, and what they represent, are described below.



SWAT Logo Graphic

This graphic appears when you are not on a call-up. Clicking on the *SWAT* logo brings up a window with travel options. Click on a listed destination to go there immediately. If you change your mind about going anywhere, click on Cancel to return





to your current location. Click on Quit to stop playing the game. Note that travel options will vary depending on your location and the situation.



Assaulter Graphic

This graphic appears when you are on a call-up as an assaulter or the element leader. Click here to see a text synopsis of the emergency.



Sniper Graphic

This graphic appears when you are on a call-up as a sniper. Click here to see a text synopsis of the emergency.



Hand Signals

When you are on a call-up, you may use hand signals to communicate with

your teammates. If you select a hand signal from the Hand Signals panel the cursor changes into the hand signal cursor. Click the cursor in the game window to use that hand signal. The corresponding animation plays in the Information button window. Note that if a team member gives a hand signal, the animation for that signal also appears in the Information button.

INTERFACE BOX

During non-sniper scenarios when the interface box is active, you can rotate it to access three interface panels: the Inventory panel, the Hand Signals panel, and the Room Entry panel. The fourth side of the box is a name plate that appears when none of the other options are available. To rotate the box, click on either the up or down arrows to the right of the box.

When you select an inventory item, a hand signal, or the Slice Pie room entry, the cursor changes to indicate your selection. Left click the cursor on the screen to use the selected item or action. Cycle between these special cursors and the default arrow cursor by clicking the right mouse button.

Inventory Panel

Inventory items are selected from the Small Arms or Sniper Gear Galleries (see the Gear Gallery section on page 14 for more information).



To Quick Select the Inventory panel, press "1" on the keyboard.

You may also click the arrows to the right of the cycling box until the

Inventory interface rotates to the front. Scroller arrows appear on each side of the Inventory panel when it is active. Click on the arrows with the left mouse button to scroll through the Inventory items.

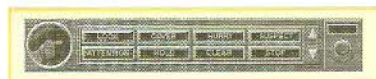
To select an inventory item from the Inventory panel, left click on the item. The cursor changes to a predetermined cursor for that item. Left click the Inventory cursor on the screen where you want to use the item.

You can cycle between the selected inventory item and the other available cursors by right clicking. Note that, unlike the cursors for hand signals or Slice Pie, the cursor for the inventory item remains active even after it is used in the game.

To return an inventory item to the inventory, left click that item on the Inventory panel. The inventory cursor

will disappear and the item will reappear in the panel. You may now select another inventory item. Note that you cannot pick up another item if one is already selected.

Hand Signals Panel



To Quick Select the Hand Signals panel, press "2" on the keyboard.

As an alternative method, access the hand signals by clicking the up or down arrow to the right of the Interface box until the Hand Signals interface rotates to the front. The hand signals, shown as labeled buttons, allow you to communicate with your team during a call-up. The eight hand signals are Hold, Cover, Hurry, Suspect, Attention, Look, Clear, and Stop.

When you click on one of the hand signals the cursor changes to represent the selected hand signal. Click the hand signal cursor on the screen and you will see animation of that hand signal within the Information button area. Note that if a team member gives a hand signal, the animation for that signal also appears in the Information button.

The key words and graphics for each hand signal are described on page 6.

You can cycle between the selected hand signal and the other available cursors by right clicking. Note that the hand signals cursor is only active until you use it in the game. Then it disappears until you select another hand signal.



**GRAPHIC TEXT****HOLD**

Fist.

**COVER**

Flat hand, horizontal.

**HURRY**

Fist with arm at right angles.

**SUSPECT**

Hand with all fingers spread.

**ATTENTION**

Snapping fingers.

**LOOK**

Index finger pointing.

**CLEAR**

Thumb up.

**STOP**

Flat hand, vertical.

Room Entry Panel

The Slice Pie command is accessible from the Room Entry panel during call-ups only. Slicing the pie is a tactical maneuver that enables you to safely enter a room or round a corner.

To Quick Select the Room Entry interface, press "3" on the keyboard.

You can also access this command by clicking the up or down arrow to the right of the Interface box until the Room Entry panel rotates to the front.

Select the Slice Pie button to access the Slice Pie cursor. Move the cursor over the screen. When the cursor passes over a "sliceable" corner, room entrance, or piece of furniture, the cursor will rotate so that its tip

points left and/or right. Click on that spot to make your move. Note that the Slice Pie cursor is inactive when the tip points straight up.

You can cycle between the Slice Pie cursor and the other available cursors by right clicking. Note that the Slice Pie cursor is only available until you use it in the game. Then it disappears until you click on the Slice Pie button again.

CONTROL PANEL BUTTON

To access the control panel, click the button labeled Control Panel in the lower right corner of the Icon bar.

The Control Panel is where you'll find the buttons enabling you to save or restore your game, and look at the game credits. Two sliders allow you



to adjust game features and are explained in greater detail below.

Save Mission

The Save Mission button saves the game at your current point of play under the appropriate career name. When you click on the Save button, you will access the Previous Call-Ups menu for this career (officer). Type in the name under which you wish to save the game.

Restore Mission

When Restore is chosen from the Control Panel, a small window appears which reads:



If you click on the Yes button, the Control Panel is replaced by the Previous Call-Ups menu for the current officer. Select the game you wish to restore. If you click "No", the Control Panel is replaced by the Previous Career Identification menu. Highlight a name on the list and click the Restore button. The Previous Career Identification menu changes to the Previous Call-Ups menu. Select the game you want to restore. If you change your mind and wish to





return to the game in progress, click on the Cancel button in the Previous Career Identification or Previous Call-Ups menus.

Play

When you've made your changes to the Control Panel, click on the Play button to resume game play at the point you left off.

Quit

When you click on the Quit button, a small window appears which reads:



Click on Yes to stop game play and return to Windows or DOS. Click on No to return to the game.

Sierra Logo

This graphic represents the About Screen button. Click it to see the credits for *Police Quest: SWAT*.

Question Mark

The Question Mark is the Help button. When you click on it, the cursor turns into a question mark. Move the cursor over any Control Panel feature (Save Mission, etc.) and leave it there to hear an explanation of that feature. If you move the cursor off the feature before the explanation is complete, the narration will stop. Click the left mouse button to change back to the standard arrow.

Sliders

Slider bars allow you to adjust the game's settings by clicking on the up or down arrows to increase or decrease the levels, respectively.

ALERT/LASH BUTTON

Alert



The Alert/LASH button is the small gray rectangle above the Control Panel button. When in Alert mode, it flashes red and an alarm sounds when a call-up (crisis scenario) is about to begin. After the Alert button goes off, you hear the dispatcher announce a description of the crisis. Then you go to the Command Post for the operation briefing.

LASH



During a call-up, the Alert button becomes the LASH interface button. LASH stands for Los Angeles SWAT Headset. Each SWAT officer wears one during a call-up to communicate with other members of the team. A throat mike picks up and transmits barely audible speech so the team won't be overheard by the suspects. Click the button when it reads LASH to access the LASH interface. A table of words appears. This table will vary depending on the scenario. Two examples of the LASH interface are shown here.

Assaulter LASH

If you're playing an assaulter during a call-up, the LASH interface appears as the following table:

L A S H			
1. GROUND	2. GROUND	3. GROUND	4. GROUND
5. GROUND	6. GROUND	7. GROUND	8. GROUND
9. GROUND	10. GROUND	11. GROUND	12. GROUND
13. GROUND	14. GROUND	15. GROUND	16. GROUND
17. GROUND	18. GROUND	19. GROUND	20. GROUND
21. GROUND	22. GROUND	23. GROUND	24. GROUND
25. GROUND	26. GROUND	27. GROUND	28. GROUND
29. GROUND	30. GROUND	31. GROUND	32. GROUND
33. GROUND	34. GROUND	35. GROUND	36. GROUND
37. GROUND	38. GROUND	39. GROUND	40. GROUND
41. GROUND	42. GROUND	43. GROUND	44. GROUND
45. GROUND	46. GROUND	47. GROUND	48. GROUND
49. GROUND	50. GROUND	51. GROUND	52. GROUND
53. GROUND	54. GROUND	55. GROUND	56. GROUND
57. GROUND	58. GROUND	59. GROUND	60. GROUND
61. GROUND	62. GROUND	63. GROUND	64. GROUND
65. GROUND	66. GROUND	67. GROUND	68. GROUND
69. GROUND	70. GROUND	71. GROUND	72. GROUND
73. GROUND	74. GROUND	75. GROUND	76. GROUND
77. GROUND	78. GROUND	79. GROUND	80. GROUND
81. GROUND	82. GROUND	83. GROUND	84. GROUND
85. GROUND	86. GROUND	87. GROUND	88. GROUND
89. GROUND	90. GROUND	91. GROUND	92. GROUND
93. GROUND	94. GROUND	95. GROUND	96. GROUND
97. GROUND	98. GROUND	99. GROUND	100. GROUND
101. GROUND	102. GROUND	103. GROUND	104. GROUND
105. GROUND	106. GROUND	107. GROUND	108. GROUND
109. GROUND	110. GROUND	111. GROUND	112. GROUND
113. GROUND	114. GROUND	115. GROUND	116. GROUND
117. GROUND	118. GROUND	119. GROUND	120. GROUND
121. GROUND	122. GROUND	123. GROUND	124. GROUND
125. GROUND	126. GROUND	127. GROUND	128. GROUND
129. GROUND	130. GROUND	131. GROUND	132. GROUND
133. GROUND	134. GROUND	135. GROUND	136. GROUND
137. GROUND	138. GROUND	139. GROUND	140. GROUND
141. GROUND	142. GROUND	143. GROUND	144. GROUND
145. GROUND	146. GROUND	147. GROUND	148. GROUND
149. GROUND	150. GROUND	151. GROUND	152. GROUND
153. GROUND	154. GROUND	155. GROUND	156. GROUND
157. GROUND	158. GROUND	159. GROUND	160. GROUND
161. GROUND	162. GROUND	163. GROUND	164. GROUND
165. GROUND	166. GROUND	167. GROUND	168. GROUND
169. GROUND	170. GROUND	171. GROUND	172. GROUND
173. GROUND	174. GROUND	175. GROUND	176. GROUND
177. GROUND	178. GROUND	179. GROUND	180. GROUND
181. GROUND	182. GROUND	183. GROUND	184. GROUND
185. GROUND	186. GROUND	187. GROUND	188. GROUND
189. GROUND	190. GROUND	191. GROUND	192. GROUND
193. GROUND	194. GROUND	195. GROUND	196. GROUND
197. GROUND	198. GROUND	199. GROUND	200. GROUND
201. GROUND	202. GROUND	203. GROUND	204. GROUND
205. GROUND	206. GROUND	207. GROUND	208. GROUND
209. GROUND	210. GROUND	211. GROUND	212. GROUND
213. GROUND	214. GROUND	215. GROUND	216. GROUND
217. GROUND	218. GROUND	219. GROUND	220. GROUND
221. GROUND	222. GROUND	223. GROUND	224. GROUND
225. GROUND	226. GROUND	227. GROUND	228. GROUND
229. GROUND	230. GROUND	231. GROUND	232. GROUND
233. GROUND	234. GROUND	235. GROUND	236. GROUND
237. GROUND	238. GROUND	239. GROUND	240. GROUND
241. GROUND	242. GROUND	243. GROUND	244. GROUND
245. GROUND	246. GROUND	247. GROUND	248. GROUND
249. GROUND	250. GROUND	251. GROUND	252. GROUND
253. GROUND	254. GROUND	255. GROUND	256. GROUND
257. GROUND	258. GROUND	259. GROUND	260. GROUND
261. GROUND	262. GROUND	263. GROUND	264. GROUND
265. GROUND	266. GROUND	267. GROUND	268. GROUND
269. GROUND	270. GROUND	271. GROUND	272. GROUND
273. GROUND	274. GROUND	275. GROUND	276. GROUND
277. GROUND	278. GROUND	279. GROUND	280. GROUND
281. GROUND	282. GROUND	283. GROUND	284. GROUND
285. GROUND	286. GROUND	287. GROUND	288. GROUND
289. GROUND	290. GROUND	291. GROUND	292. GROUND
293. GROUND	294. GROUND	295. GROUND	296. GROUND
297. GROUND	298. GROUND	299. GROUND	300. GROUND
301. GROUND	302. GROUND	303. GROUND	304. GROUND
305. GROUND	306. GROUND	307. GROUND	308. GROUND
309. GROUND	310. GROUND	311. GROUND	312. GROUND
313. GROUND	314. GROUND	315. GROUND	316. GROUND
317. GROUND	318. GROUND	319. GROUND	320. GROUND
321. GROUND	322. GROUND	323. GROUND	324. GROUND
325. GROUND	326. GROUND	327. GROUND	328. GROUND
329. GROUND	330. GROUND	331. GROUND	332. GROUND
333. GROUND	334. GROUND	335. GROUND	336. GROUND
337. GROUND	338. GROUND	339. GROUND	340. GROUND
341. GROUND	342. GROUND	343. GROUND	344. GROUND
345. GROUND	346. GROUND	347. GROUND	348. GROUND
349. GROUND	350. GROUND	351. GROUND	352. GROUND
353. GROUND	354. GROUND	355. GROUND	356. GROUND
357. GROUND	358. GROUND	359. GROUND	360. GROUND
361. GROUND	362. GROUND	363. GROUND	364. GROUND
365. GROUND	366. GROUND	367. GROUND	368. GROUND
369. GROUND	370. GROUND	371. GROUND	372. GROUND
373. GROUND	374. GROUND	375. GROUND	376. GROUND
377. GROUND	378. GROUND	379. GROUND	380. GROUND
381. GROUND	382. GROUND	383. GROUND	384. GROUND
385. GROUND	386. GROUND	387. GROUND	388. GROUND
389. GROUND	390. GROUND	391. GROUND	392. GROUND
393. GROUND	394. GROUND	395. GROUND	396. GROUND
397. GROUND	398. GROUND	399. GROUND	400. GROUND
401. GROUND	402. GROUND	403. GROUND	404. GROUND
405. GROUND	406. GROUND	407. GROUND	408. GROUND
409. GROUND	410. GROUND	411. GROUND	412. GROUND
413. GROUND	414. GROUND	415. GROUND	416. GROUND
417. GROUND	418. GROUND	419. GROUND	420. GROUND
421. GROUND	422. GROUND	423. GROUND	424. GROUND
425. GROUND	426. GROUND	427. GROUND	428. GROUND
429. GROUND	430. GROUND	431. GROUND	432. GROUND
433. GROUND	434. GROUND	435. GROUND	436. GROUND
437. GROUND	438. GROUND	439. GROUND	440. GROUND
441. GROUND	442. GROUND	443. GROUND	444. GROUND
445. GROUND	446. GROUND	447. GROUND	448. GROUND
449. GROUND	450. GROUND	451. GROUND	452. GROUND
453. GROUND	454. GROUND	455. GROUND	456. GROUND
457. GROUND	458. GROUND	459. GROUND	460. GROUND
461. GROUND	462. GROUND	463. GROUND	464. GROUND
465. GROUND	466. GROUND	467. GROUND	468. GROUND
469. GROUND	470. GROUND	471. GROUND	472. GROUND
473. GROUND	474. GROUND	475. GROUND	476. GROUND
477. GROUND	478. GROUND	479. GROUND	480. GROUND
481. GROUND	482. GROUND	483. GROUND	484. GROUND
485. GROUND	486. GROUND	487. GROUND	488. GROUND
489. GROUND	490. GROUND	491. GROUND	492. GROUND
493. GROUND	494. GROUND	495. GROUND	496. GROUND
497. GROUND	498. GROUND	499. GROUND	500. GROUND
501. GROUND	502. GROUND	503. GROUND	504. GROUND
505. GROUND	506. GROUND	507. GROUND	508. GROUND
509. GROUND	510. GROUND	511. GROUND	512. GROUND
513. GROUND	514. GROUND	515. GROUND	516. GROUND
517. GROUND	518. GROUND	519. GROUND	520. GROUND
521. GROUND	522. GROUND	523. GROUND	524. GROUND
525. GROUND	526. GROUND	527. GROUND	528. GROUND
529. GROUND	530. GROUND	531. GROUND	532. GROUND
533. GROUND	534. GROUND	535. GROUND	536. GROUND
537. GROUND	538. GROUND	539. GROUND	540. GROUND
541. GROUND	542. GROUND	543. GROUND	544. GROUND
545. GROUND	546. GROUND	547. GROUND	548. GROUND
549. GROUND	550. GROUND	551. GROUND	552. GROUND
553. GROUND	554. GROUND	555. GROUND	556. GROUND
557. GROUND	558. GROUND	559. GROUND	560. GROUND
561. GROUND	562. GROUND	563. GROUND	564. GROUND
565. GROUND	566. GROUND	567. GROUND	568. GROUND
569. GROUND	570. GROUND	571. GROUND	572. GROUND
573. GROUND	574. GROUND	575. GROUND	576. GROUND
577. GROUND	578. GROUND	579. GROUND	580. GROUND
581. GROUND	582. GROUND	583. GROUND	584. GROUND
585. GROUND	586. GROUND	587. GROUND	588. GROUND
589. GROUND	590. GROUND	591. GROUND	592. GROUND
593. GROUND	594. GROUND	595. GROUND	596. GROUND
597. GROUND	598. GROUND	599. GROUND	600. GROUND
601. GROUND	602. GROUND	603. GROUND	604. GROUND
605. GROUND	606. GROUND	607. GROUND	608. GROUND
609. GROUND	610. GROUND	611. GROUND	612. GROUND
613. GROUND	614. GROUND	615. GROUND	616. GROUND
617. GROUND	618. GROUND	619. GROUND	620. GROUND
621. GROUND	622. GROUND	623. GROUND	624. GROUND
625. GROUND	626. GROUND	627. GROUND	628. GROUND
629. GROUND	630. GROUND	631. GROUND	632. GROUND
633. GROUND	634. GROUND	635. GROUND	636. GROUND
637. GROUND	638. GROUND	639. GROUND	640. GROUND
641. GROUND	642. GROUND	643. GROUND	644. GROUND
645. GROUND	646. GROUND	647. GROUND	648. GROUND
649. GROUND	650. GROUND	651. GROUND	652. GROUND
653. GROUND	654. GROUND	655. GROUND	656. GROUND
657. GROUND	658. GROUND	659. GROUND	660. GROUND
661. GROUND	662. GROUND	663. GROUND	664. GROUND
665. GROUND	666. GROUND	667. GROUND	668. GROUND
669. GROUND	670. GROUND	671. GROUND	672. GROUND
673. GROUND	674. GROUND	675. GROUND	676. GROUND
677. GROUND	678. GROUND	679. GROUND	680. GROUND
681. GROUND	682. GROUND	683. GROUND	684. GROUND
685. GROUND	686. GROUND	687. GROUND	688. GROUND
689. GROUND	690. GROUND	691. GROUND	692. GROUND
693. GROUND	694. GROUND	695. GROUND	696. GROUND
697. GROUND	698. GROUND	699. GROUND	700. GROUND
701. GROUND	702. GROUND	703. GROUND	704. GROUND
705. GROUND	706. GROUND	707. GROUND	708. GROUND
709. GROUND	710. GROUND	711. GROUND	712. GROUND
713. GROUND	714. GROUND	715. GROUND	716. GROUND
717. GROUND	718. GROUND	719. GROUND	720. GROUND
721. GROUND	722. GROUND	723. GROUND	724. GROUND
725. GROUND	726. GROUND	727. GROUND	728. GROUND
729. GROUND	730. GROUND	731. GROUND	732. GROUND
733. GROUND	734. GROUND	735. GROUND	736. GROUND
737. GROUND	738. GROUND	739. GROUND	740. GROUND
741. GROUND	742. GROUND	743. GROUND	744. GROUND
745. GROUND	746. GROUND	747. GROUND	748. GROUND
749. GROUND	750. GROUND	751. GROUND	752. GROUND
753. GROUND	754. GROUND	755. GROUND	756. GROUND
757. GROUND	758. GROUND	759. GROUND	760. GROUND
761. GROUND	762. GROUND	763. GROUND	764. GROUND
765. GROUND	766. GROUND	767. GROUND	768. GROUND
769. GROUND	770. GROUND	771. GROUND	772. GROUND
773. GROUND	774. GROUND	775. GROUND	776. GROUND
777. GROUND	778. GROUND	779. GROUND	780. GROUND
781. GROUND	782. GROUND	783. GROUND	784. GROUND
785. GROUND	786. GROUND	787. GROUND	788. GROUND
789. GROUND	790. GROUND	791. GROUND	792. GROUND
793. GROUND	794. GROUND	795. GROUND	796. GROUND
797. GROUND	798. GROUND	799. GROUND	800. GROUND
801. GROUND	802. GROUND	803. GROUND	804. GROUND
805. GROUND	806. GROUND	807. GROUND	808. GROUND
809. GROUND	810. GROUND	811. GROUND	812. GROUND
813. GROUND	814. GROUND	815. GROUND	816. GROUND
817. GROUND	818. GROUND	819. GROUND	820. GROUND
821. GROUND	822. GROUND	823. GROUND	824. GROUND
825. GROUND	826. GROUND	827. GROUND	828. GROUND
829. GROUND	830. GROUND	831. GROUND	832. GROUND
833. GROUND	834. GROUND	835. GROUND	836. GROUND
837. GROUND	838. GROUND	839. GROUND	840. GROUND
841. GROUND	842. GROUND	843. GROUND	844. GROUND
845. GROUND	846. GROUND	847. GROUND	848. GROUND
849. GROUND	850. GROUND	851. GROUND	852. GROUND
853. GROUND	854. GROUND	855. GROUND	856. GROUND
857. GROUND	858. GROUND	859. GROUND	860. GROUND
861. GROUND	862. GROUND	863. GROUND	864. GROUND
865. GROUND	866. GROUND	867. GROUND	868. GROUND
869. GROUND	870. GROUND	871. GROUND	872. GROUND
873. GROUND	874. GROUND	875. GROUND	876. GROUND
877. GROUND	878. GROUND	879. GROUND	880. GROUND
881. GROUND	882. GROUND		



The third section consists of the three buttons labeled "In Position", "Compromised", and "Trailer". You can activate only one of these buttons per message.

The fourth section allows you to inform your team of suspect and hostage conditions. Select either "Suspect" or "Hostage" and then click one of the three boxes directly below: "In Control", "Down", or "Coming Out".

When you have finished forming your message(s), click "Transmit" to send it to your element.

If you change your mind about sending a particular message, re-click on the buttons to un-highlight them. If you want to clear the entire message for either the A Team or the B Team, you can take a short-cut by clicking on that Entry Team button.

All the buttons in that section will return to their normal state.

If you change your mind about sending any message at all, click the Transmit button while no other buttons are highlighted. This will cancel the LASH interface and return you to the game.

THE INTERFACE

CURSORS

There are no traditional Hand, Walk, Talk, or Look icons in *Police Quest: SWAT*. You use a default arrow cursor and specific inventory, hand signal, and movement cursors to interact with the game. Click the left mouse button to use the cursors. Click the right mouse button to toggle between cursors. See the sections on Inventory, Hand Signals,

and Room Entry for further explanation of cursor use.

DIRECTIONAL ARROWS

During crisis situations, if you move the default arrow cursor to the sides of the screen, it may change into a directional arrow. This arrow indicates that you can move off the screen in that direction.

SPACE BAR

If you've already seen a particular conversation or movie sequence and wish to skip over it, hit the Space bar to terminate that segment. Note that this command is not functional for every conversation or movie sequence in the game.

PLAYING THE GAME

MAIN MENU

After the opening sequence, the Main Menu appears. Now you have control over the game. Options available from the Main Menu are New Career, Previous Career, Control Panel, Credits, and Quit. These options are explained below.

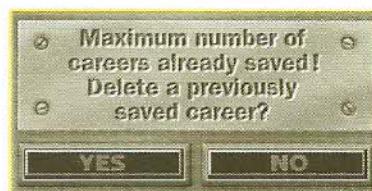
Careers

When you begin the game, you start a new career and assign to it the name of your officer. You can save the game (called a "call-up") and then restore to continue playing from that point. Or you can start a new game, replaying the same officer under different circumstances. Or you can begin a new game with a new officer. The game will save twenty call-ups for each of ten careers.

New Career

Click New Career to create a new character. You will see the SWAT Mission Statement. A commanding officer welcomes you and gives you some background about the Special Weapons And Tactics unit. When he is done talking, "sign" the Mission Statement by typing a name for this particular officer (career) in the box below the text. Backspace to erase. When you enter this officer's name, you automatically go to Metro Division, SWAT headquarters in downtown Los Angeles. If at this point you want to return to the Main Menu, access the Control Panel, or quit the game, click on the SWAT logo in the upper left corner. If you click on the Sierra logo in the lower right corner, you will go to Metro as Officer SWAT Pup, the default name.

If you already have created ten careers, when you try to create another character, a small box will appear with the following text and buttons:



Click on "Yes" to bring up the Saved Game box containing the names of the previously saved careers. You can choose which career to delete by highlighting that name and then clicking on the Delete button. You will return to the New Career menu and can now create a new character. Click "No" and you will go back to the Main Menu.





Previous Career

Click here to resume the identity of a previously created character. Select the officer you want to play by highlighting his name. If you want that officer to start a new game from scratch, click on the SWAT logo in the upper right corner to access travel options including Metro, Control Panel, Main Menu, Cancel, and Quit. Click on Metro and you will go directly to SWAT headquarters.

If you want to continue the officer's career from a saved call-up, click on the Restore button after you've selected his name. A list of that officer's saved call-ups appears. Highlight each call-up to see the cumulative medals awarded to the officer at that particular point in the game. Click on the Restore button to play the highlighted call-up.

Control Panel

Click here to access the Control Panel. For a description of the features available in the Control Panel, see the section entitled Control Panel button on page 7.

Credits

Click here to see the credits for *Police Quest: SWAT*. Press the Space Bar to return to the game.

Quit

When you click on the Quit button, a small window appears which reads:



Click on "Yes" to stop game play and

return you to Windows or DOS. Click on "No" to return to the Main Menu.

METRO DIVISION

The SWAT unit is based at Metro Division in downtown Los Angeles. Here in the Metro classroom, you'll hear lectures, study Tactical Education material, and access the Interactive Profile interviews with real SWAT sergeants. When you are ready to leave, click on the classroom door to go to the Travel Map.

Tactical Education

The Tactical Education section is accessible by clicking on the blackboard in the Metro classroom. A close-up view shows the topic categories. Pick one. Depending on which category you select, you will see one of two interfaces.

If you select Training Bulletins, Commendations, D Platoon, or Tactical Considerations, you will see a text box on the left and a photo window on the right. The topic selection box is centered beneath them.

If you select Tactical Movement or Sharpshooter Considerations, you will see one window with the topic selection box centered beneath it.

To select a topic, click on the up/down arrows on the right side of the topic box. When the topic you want is highlighted, click on the red arrow to the left of the topic box.

Read the information and look at the visuals. Use the scroll bar if it is available. When you're done, use the topic selection box to pick another topic. Click on the Information button (SWAT logo) and select Metro

or Tactical Education to return to either the classroom or the blackboard, respectively.

Interactive Profiles

The Interactive Profiles are accessible from the Metro classroom. Click on the TVs or the VCR. Follow the narrator's instructions to access the interactive interviews.



The Interactive Profile interface consists of a window on the left containing photos of each officer,

and a text box on the right. To see the officers, click on the right or left arrows beneath the window. When you see the officer you want to interview, click on the bar marked Interview. The door on the right rolls up, revealing the question list. Use the scroll bar to move through the list. Click on a question that interests you and then click the Play button (represented by a right arrow) on the bottom of the window. There you will also see icons for Stop (a square), Fast Forward (two right arrows), and Reverse (a left arrow). These buttons function like VCR controls. Watch the officer's response and then select another question or another interviewee.

When you want to return to the game, click on the Information button (SWAT logo) and select Metro as your destination.





Travel Map

Access the Travel Map by clicking on the door in the Metro classroom, or click on the Information button (the SWAT logo) and then select Travel Map.

There are three destinations on the Travel Map: Metro, the Police Academy, and the Angeles Range. Click on the desired destination and you will be transported there immediately.

SHOOTING RANGES

GEAR GALLERIES

Access the Gear Galleries by clicking either the Police Academy or the Angeles Range on the Travel Map. You will go directly to the Gallery pertaining to the range selected.

The same interface is used for both the Police Academy Gallery and the Angeles Range Gallery; however, the collection of available gear differs as is appropriate for either small arms shooting or sniping, respectively.



It's important to know each piece of equipment and how it operates. Select an item for examination by positioning the highlight frame over it. When the highlight frame moves to a new item, the narrator will identify that piece of equipment. There are two ways to move the highlight frame around the window. Use either the directional arrows to the right of the window or click the arrow cursor directly on the inventory item of choice. Use the scroll bar to the right of the window to access additional rows of equipment.

To get a closer view and a detailed description of an object, highlight it and then click on the Detail button.



The Detail screen comes up over the Gallery window. Click on each of the four directional arrows to the right to move between the item's four quadrants. Accessing each quadrant will provide additional information about the selected item. To return to the Gallery window, click the button labeled Gear.

Clicking the square in the center of the directional arrows interrupts the narrator's description of a particular item.

When you're ready to move onto the firing range, click the Select button.

With just one click, all the gear you need is placed in your Inventory box at the bottom of the screen. You can click the Select button in either Gear or Detail mode.

Please note that you do not have to study and memorize every piece of equipment the first time you visit the ranges. Any time you go to either range, you pass through the Gallery on your way to the firing line. If you're eager to shoot, just click Select to collect your gear immediately.

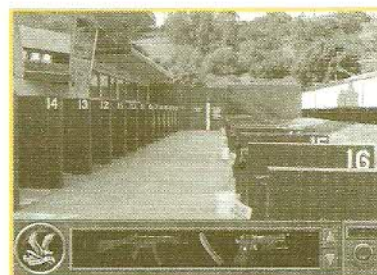


To leave the Galleries, click the Information button (SWAT logo). You will be given a list of possible destinations. If you are at the Police Academy, the options are the Small Arms Range, the Combat Range, Metro, Travel Map, Main Menu, Cancel, and Quit. If you are at the Angeles Range Gear Gallery, the options are the Angeles Range, Metro, Travel Map, Main Menu, Cancel, and Quit. Please note that if you choose to leave the Academy or the Angeles Range, the SWAT nameplate appears over the Inventory box, rendering it inactive.

POLICE ACADEMY RANGE:

Small Arms

When you first enter the Small Arms Range area, you will be greeted by Sergeant Pauldon. After introducing



you to your fellow SWAT officers, he directs you to Lane 13. The seven-yard firing line appears in first-person perspective. You should see the target and the Pact timer.

The first training session is with the MP5 at seven yards. It consists of a sequence of six drills. Pauldon instructs you to make ready with your weapon. Select the MP5 from the Inventory. The MP5 sight appears along with an inset of the Selector lever.





The Selector Lever

The Selector lever has three settings: safety, semi-auto, and automatic fire. The safety setting is a graphic of a bullet with an X through it. Semi-auto is one bullet. Automatic is a stream of bullets.

Pauldon calls out each drill twice before the start whistle sounds. When he calls out the drill the first time, click the selector lever to the appropriate setting. Click outside the selector box. It will disappear if set correctly.

Pauldon will call out the drill again. There is a one-second pause and then the whistle will sound to start the drill.

The Pact Timer

The Pact Timer appears as an inset in the upper left corner of the screen. The par time appears on the left side of the Pact timer, indicating

the amount of time allotted for the drill. After you take your shots, check the number on the right side of the Pact timer for your time.



There are four buttons on the top of the Pact timer. The furthest button to the left cycles through your rounds, showing the elapsed time between each shot. The second button shows how long it took you to fire your first shot after the whistle. The third button shows how many shots were taken after the par time. The red button resets the timer and sets up the next drill. Note that it is not necessary for you to manually set up the drills. After a few seconds, the next drill sets up automatically.

Reloading



The MP5 and M16 load thirty bullets at a time. The Colt .45 holds eight bullets plus one in the chamber. The shotgun holds seven shells and one in the chamber. Keep track of the rounds fired so you will know when to reload. You can reload the weapon during a drill or between drills.

There are two ways to reload. The first method is to click the weapon back into the Inventory and then click the magazine on the weapon. Re-select the weapon for the next drill. Or you can rapid load by simply clicking the weapon cursor on the magazine in the Inventory panel. Either way you will never run out of additional full magazines while you're at the range.

Leaving the Range

If you want to leave during a training session, click on the Information button (SWAT logo) and select a travel destination.

After the series of six drills, Pauldon will tell you to put the weapon on safe and let it hang. If you are shooting with the MP5, put the selector lever on the safety setting. You return to a third-person view of the Small Arms Range. If you wish to leave at this time, either click on the Information button (SWAT logo) to see your travel options, or click on the back doors to access the Travel Map.

If you just stand around doing nothing for five seconds, you will go back to the firing line and Pauldon will tell you to make ready for the next drill.

Note that if you click any weapon on

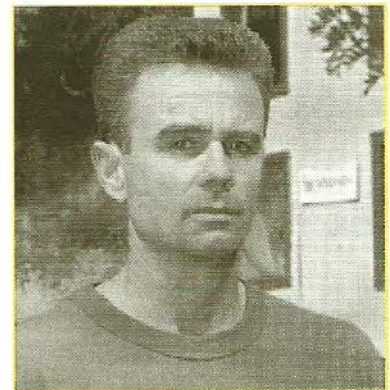
the target building on the right you will re-enter the last visited yard line and the drills for that particular weapon will begin. If you click your arrow cursor on either yard line you will enter that yard line and drills will begin.

POLICE ACADEMY RANGE:

Combat

If you have completed the first drill at the Small Arms Range, the Combat Range becomes accessible from the Police Academy. When you enter the Combat Range as an assaulter, Officer Pacmeyer will be the drill instructor.

Three different drills are selected at random during your visit to the range. The three drills are called the Dozier, the Presidente, and the Combat. All three use the Colt .45.



Officer Pacmeyer

A drill may be repeated multiple times during each visit to the range.

After the officer in charge has told you about the drill, you will see the Combat Range. Depending on the drill, targets may or may not be set up. The officer will tell you to make ready with the .45. Select the .45





from the Inventory. The .45 cursor appears in a low ready position.

The Drills

The Dozier drill consists of five pepper popper targets lined up at ten yards. You shoot at all five targets as many times as necessary until they fall. Reload your weapon during the drill if you have to. The par time is five seconds but the drill lasts twenty seconds before the officer in charge will call for guns at low ready.

The Presidente drill consists of three paper silhouette targets. Starting from either the right or the left, shoot the first target once, the second target once, and the third target twice. Then shoot the second target once and the first target once. Speed load and repeat. Par time is ten seconds

though the drill lasts twenty seconds.

The Combat drill shows no targets before the whistle. Shoot the moving paper targets when they pop up. Reload as necessary. Because this is a reflex drill, there is no par time, but the drill will be called after twenty seconds.

Reloading

The Colt .45 holds eight bullets in the magazine plus one in the chamber. You can reload your weapon during or between drills. Click the weapon back into the inventory, click the .45 magazine on the weapon, and re-select the weapon for the next drill. Or rapid load by simply clicking the weapon cursor on the .45 magazine in the Inventory panel. You will never run out of extra ammunition during the drills.

Leaving the Range

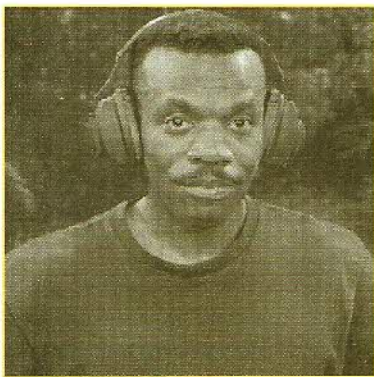
If you want to leave during a training session, click on the Information button (SWAT logo) and select a travel destination. At the conclusion of a drill, you can leave by clicking the Information button (SWAT logo) and choosing another location from the travel options presented.

Angeles Range: First Training Session

To get to the Angeles Range, select it from the Travel Map. If you haven't completed the first training session at the Small Arms Range, Officer Tello will send you packing.

If you come to the Angeles Range after completing the initial small arms training session, you will be greeted by JD Saunders. He will be your sniping partner, also known as

an observer. Follow Saunders into the Sniper Gallery to pick up your gear.



JD Saunders

Take some time to study the equipment in Detail mode. When you are familiar with the gear, click on the Select button to put the Gallery arsenal in your Inventory box. With just one click, you now have access to everything you need.

Select the Information button (SWAT logo). Choose the Angeles Range to go back outside. Saunders introduces you to Sergeant Pruett, the officer in charge of sniper training. Click on the tables or just wait until the scene changes to a first-person view in which you see Saunders, the target area, and a flag indicating wind speed and direction.

Saunders introduces you to your Robar SR60 .308 bolt action rifle. He suggests that before you zero your rifle, you should check out the information in the data book. Click on the rifle to start the drill or click on the data book in Inventory.

Data Book

Look at the data book by clicking on it in Inventory. Turn the pages forward by clicking on the top right

corner. Turn pages back by clicking on the dog-eared top right corner. Exit the data book by clicking off of the book.

Tables and charts take up the first six pages of the data book. The next three pages record your shooting information. When you have filled these three pages, they will be recycled.

Click on the shot numbers in the row along the bottom of the record page to call up the information for individual shots. On the right side of the page you'll see the silhouette target showing shot placement.

Zeroing the Rifle

Click on the rifle to bring up the rifle scope. Through the scope you will see a one-inch square target at a range of 100 yards. Saunders tells





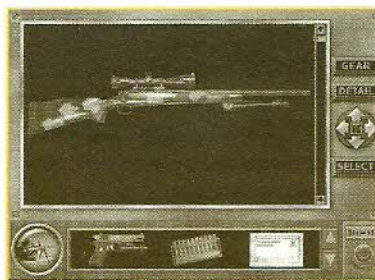
you about the adjustment knobs on the scope. At this time, do not make any adjustments. Center the crosshairs on the target by moving the mouse. When you're confident of your aim, click the mouse to get the arrow cursor back, then click the arrow on the stock of the rifle to fire. If you miss, reload by selecting the ammo from inventory and then clicking it on the rifle stock. Aim and fire again.

After you shoot, Saunders will tell you how to adjust the Bullet Drop Compensator (BDC) and the Windage knob to zero your rifle. Make the adjustments, reload, aim, and fire again. Saunders will continue to prompt you until you get it right or leave the range. If you wish to leave the range, click on the Information button (SWAT logo) and choose another destination.

Subsequent Training Sessions

When you return to the Angeles Range, you will find yourself in the Sniper Gallery. Select your gear, then click the Information button (SWAT logo) to go out to the shooting range.

Saunders offers to spot for you. He will call a series of random drills. Before firing, you need to make adjustments based on distance and



windage conditions. Use your zero settings (recorded in the data book) as a point of reference.

Target distance varies from 25 to 500 yards. No matter what the range, you need to compensate for it with the BDC (see the Range Estimation charts in the Data Book Charts section beginning on page 23). Once you've zeroed your rifle for a certain distance, no further BDC adjustment will be necessary when shooting at that distance.

The wind will be a random factor although it remains constant during each training session. If the distance is 100 yards or greater, you need to compensate for the wind (see the Windage charts in the Data Book Section). Adjust the windage knob depending on the speed and direction of the wind.

The drills are randomly selected from the following:

Five-shot group at 25, 50, 75, and 100 yards.

Nine targets, nine bull's-eyes at 25, 50, 75, and 100 yards.

Three balloon targets at 25, 50, 75, and 100 yards (call the color).

Silhouette at 100, 200, 250, 300, 400, and 500 yards (call the shot placement).

At the end of each drill, you'll return to the third-person perspective. If you do nothing for ten seconds, you go back to the firing line to continue with subsequent sniper drills. If you wish to leave, click on the Information button (SWAT logo) and choose another destination.

Sniper Qualification Test

When you visit Metro after two training sessions at the Angeles Range, Officer Pacmeyer asks if you

want to take the sniper qualification test. If you say "YES", then the next time you go to the Angeles Range, you will take the test. You need to shoot 100% in the qualification round before you can be called up as a sniper.

The sniper qualification test consists of the following three drills:

At 100 yards:

- ☐ Cold barrel shot.
- ☐ Five-round group in a one-and-a-half-inch square target.
- ☐ Nine rounds into nine one-and-a-half-inch square targets.

If you miss any of the shots, you fail the qualification test. Return to the range for two more practice sessions, then go back to Metro where Pacmeyer will give you another

chance. If you hit all your shots, you pass the qualification and are eligible to be called up as a sniper.

Note that you may leave the qualification session at any time by way of the Information button (SWAT logo); however, if you choose to do so you will not be able to come back and pick up where you left off. Just as if you had failed the test, you will need to participate in two additional sniper training sessions before you get another chance to qualify.

CALL-UPS

Once you've reached a certain level of proficiency in SWAT tactics, you become eligible for call-up during a crisis situation. When an emergency occurs, the alarm sounds and the alert button flashes red. You stop





whatever you're doing and go to the scene for briefing.

Until you qualify as a sniper or element leader, you will play the role of an assaulter during the call-ups. Listen carefully to the team leader and follow his instructions to the letter. Failure to do so will result in disciplinary measures at least, and the real possibility of fatalities.

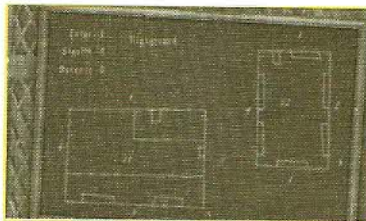
During the call-ups, you have access to the appropriate gear inventory, hand signals, the Slice Pie room entry technique, and the LASH interface. See the Icon Bar section beginning on page 3 for further description of these options.

When you become the element leader, you will call the shots, directing your team's movement and actions during the call-up. Use the LASH interface to give instructions

and communicate with your team (see the section on the LASH interface for details). During the briefing, you also need to determine and explain your entry strategy to the team by using the grease board.

GREASE BOARD

When Rooker asks you to decide where to enter the building, you'll see a close-up of the grease board.



Your entrance choices flash red. Pick one by clicking on it. Then confirm your choice by clicking on

"Enter". Rooker will continue to ask you questions about entry tactics. Your possible choices flash red. Click on one of the flashing items to select it. Make your decisions thoughtfully as the tactics you choose will determine the out come of the call up.

TACTICAL RIFLE DATA BOOK



ORGANIZATION/DEPARTMENT LAPD SWAT

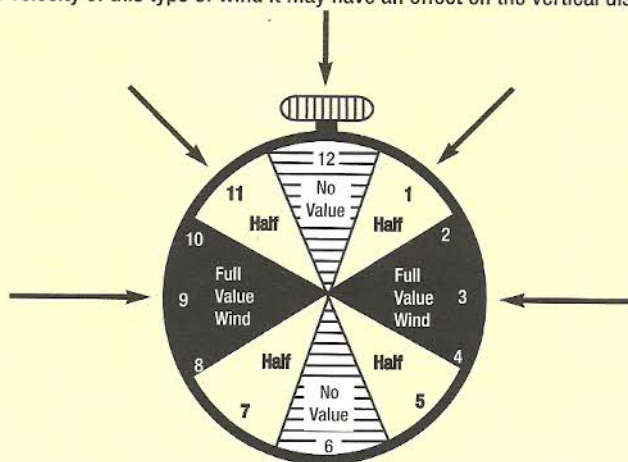
RIFLE TYPE Robar SR-60 .308





WINDAGE INFORMATION

Since the shooter must know how much effect the wind will have on the bullet, he must be able to classify the wind. The accepted method is by use of the clock system. A half value wind will affect the strike of the bullet approximately one half as much as a full value wind of the same velocity. A wind velocity corrected in this manner is called the "effective wind." The so called "no value" wind has a definite effect on the bullet at the long ranges if it is not blowing directly from 6 or 12 o'clock. This is the most difficult wind to fire in due to the switching or "fishtail" effect which requires frequent sight changes. Depending on the velocity of this type of wind it may have an effect on the vertical displacement of the bullet.



WIND MAY BE ESTIMATED USING THE BELOW GUIDES

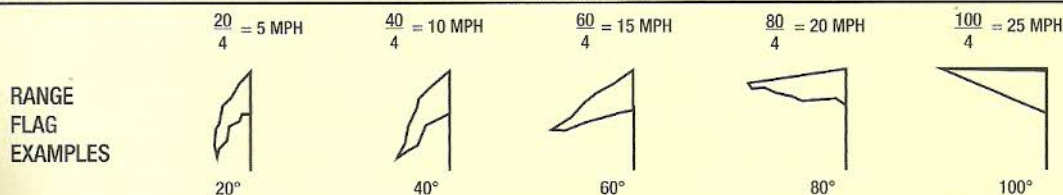
- (a) A wind under 3 miles per hour can hardly be felt, but does cause smoke to drift.
- (b) A 3 to 5 mile per hour wind is felt lightly on the face.
- (c) A 5 to 8 mile per hour wind keeps tree leaves in constant motion.
- (d) An 8 to 12 mile per hour wind raises dust and loose paper.
- (e) A 12 to 15 mile per hour wind causes small trees to sway.

After determining wind direction and velocity, the windage correction to be placed on the sights will be based on the following formula:

The formula for .308 cal rifle: $\frac{R \times V}{15} = \text{number of 1 minute clicks for a full wind.}$

For half value winds simply divide the answer by two. In this formula, R = range in hundreds of yards and V = velocity of the wind in miles per hour. The constant 10 or 15 was arrived at mathematically considering the bullet weight, density of the air, velocity, air resistance, distance to the target, rear sight movement, etc.

EXAMPLE: The wind is blowing from 9 o'clock at 10 miles per hour. The range is 300 yards; using the wind formula, R=3 and V=10.





Range Estimation Formula Method

This method requires the use of either binoculars or telescopic sight equipped with a mil scale. To use the formula, the sniper must know the average size of a man or any given piece of equipment and he must be able to express the height of the target in yards.

The formula is:
$$\frac{\text{SIZE OF OBJECT (IN YDS.)} \times 1,000}{\text{SIZE OF OBJECT (IN MILS)}} = \text{RANGE OF TARGET}$$

For example: A sniper, looking through his scope, sees a man standing. He measures the size of the man, using the mil scale on the reticle, and sees that the man is 4 mils high. He knows that the average man is 6 feet tall. To convert 6 feet to yards, he divides by 3 and finds that the man is 2.0 yards tall.

Using the formula:
$$\frac{\text{SIZE OF OBJECT (IN YDS.) } 2.0 \times 1,000}{\text{SIZE OF OBJECT (IN MILS) } 4} = \frac{2,000}{4} = 500 \text{ YARDS}$$

Once the formula is understood, he needs only to be able to estimate the actual height of any target and he can determine the range to that target extremely accurately.

Limitations: While this formula can be extremely accurate, it does have several limitations.

- 1) At long ranges, measurement in mils must be precise to the nearest half mil or a miss will result. Careless measurement could result in a range estimation error.
- 2) This formula depends entirely on the sniper's ability to estimate the actual height of a target in yards.

ELEVATION			MOVING TARGET LEADS					WIND DRAFT		
Distance In Yards	Trajectory in inches	Comeups 1/4 MOAs						(in inches)		
100	Zero		Walking (3 MPH)					5 mph	10 mph	
		9 Clicks	7"	13"	21"	29"	37"	100	0.4	0.8
200	+2.2	12 Clicks	100 Yds 12.6"	200 Yds 26.4"	300 Yds 40.8"	400 Yds 57.0"	500 Yds 73.2"	200	1.5	3.1
300	+5.3	14 Clicks	Running (6MPH)					300	3.7	7.4
400	+8.9	16 Clicks	REMEMBER: Oblique movement is 1/2 value!					400	6.8	13.6
500	+13.0	18 Clicks	UP/DOWN COMPENSATION					500	11.1	22.2
600	+17.5	20 Clicks	(data for 45 degrees Up/Down angle)					600	16.7	33.3
700	+22.6	23 Clicks	0.8"	3.4"	8.0"	15.0"	25.0"	700	23.6	47.1
800	+28.4	26 Clicks	100 Yds	200 Yds	300 Yds	400 Yds	500 Yds	800	32.0	64.1
900	+35.0	29 Clicks	REMEMBER: Always compensate by aiming LOW!					900	42.1	84.2
1000	+42.2							1000	53.7	107.5

FED 308M





RANGE ESTIMATION TABLE OF MILS FOR OBJECTS

FEET	3	4	5	6	7	8	9	10	11	12	13	14	
YARDS	1	1.3	1.7	2	2.3	2.7	3	3.3	3.7	4	4.3	4.7	
MILS	2	500	650	850	1000	1150	1350	1500	1650	1850	2000	2150	2350
	2.5	400	520	680	800	920	1080	1200	1320	1480	1600	1720	1880
	3	333	425	566	666	766	900	999	1100	1230	1332	1433	1566
	3.5	285	371	486	571	657	771	855	943	1057	1140	1229	1343
	4	250	325	425	500	575	675	750	825	925	1000	1075	1175
	4.5	222	289	378	444	511	600	666	733	822	888	950	1044
	5	200	260	340	400	460	540	600	660	740	800	860	940
	5.5	182	236	309	362	418	491	543	550	673	724	782	855
	6	167	217	283	334	383	450	500	508	617	668	717	783
	6.5	154	200	262	308	354	415	462	471	569	616	662	723
	7	143	186	243	286	329	386	429	440	529	572	614	671
	7.5	133	173	227	266	307	360	399	413	493	532	573	627
	8	125	163	213	250	288	338	375	388	463	500	538	588
	8.5	118	153	200	234	271	318	351	367	435	468	506	553
	9	111	144	189	222	256	300	333	347	411	444	478	522
	9.5	105	137	179	210	242	284	315	330	389	420	453	495
	10	100	130	170	200	230	270	300	314	370	400	430	470
	10.5								300	352	381	410	448
	11	1) Estimate height of target and locate across top								336	367	390	427
	11.5	2) Measure height of target in Mils and locate down the side								322	348	374	409
	12	3) Move down from the top and right from the side to find the range								308	333	358	392
	$\frac{\text{Height of TGT (yards)} \times 1000}{\text{Height of TGT (Mils)}} = \text{Range}$												

TABLE FOR 6' MAN

HEIGHT IN MILS	STANDING In Yds.	SITTING In Yds
1	2000	1000
1.5	1333	666
2	1000	500
2.5	800	400
3	666	333
3.5	571	286
4	500	250
4.5	444	222
5	400	200
5.5	364	182
6	333	167
6.5	308	154
7	286	143
7.5	267	133
8	250	125
8.5	235	118
9	222	111
9.5	211	105
10	200	100

TABLE FOR 5'6" MAN

HEIGHT IN MILS	STANDING In Yds.	SITTING In Yds
1	1800	900
1.5	1200	600
2	900	450
2.5	750	375
3	600	300
3.5	514	257
4	450	225
4.5	400	200
5	360	180
5.5	327	164
6	300	150
6.5	277	139
7	257	129
8	225	113
9	200	100
10	180	90



**TRAJECTORY TABLE, FEDERAL MATCH .308 BOAT-TAIL HOLLOWPOINT**

Trajectory by Yards, Expressed in Inches

Zero Range	100	200	300	400	500
100 Yards	Zero	-4.5	-15.9	-35.5	-64.6
200 Yards	+2.2	Zero	-9.15	-26.5	-53.3
300 Yards	+5.3	+6.1	Zero	-14.3	-38.1
400 Yards	+8.9	+13.3	+10.8	Zero	-20.1
500 Yards	+13.0	+21.5	+23.1	+16.5	Zero

YARD SILHOUETTE TARGET											POSITION:			
RANGE	RIFLE	DATE	ELEVATION								WINDAGE			
			Used				Correct				Used	Correct		
AMMUNITION		TEMP		ZERO										
LIGHT		HOUR		100 YARDS										
<div>LIGHT Direction</div>		<div>WIND WINDAGE</div>		ELEVATION							<div> USPSA/IPSC TM 102 GROUP</div>			
REMARKS														
SHOT	1	2	3	4	5	6	7	8	9	10				
WIND														
WIND														
VELOCITY														





TECHNICAL SUPPORT & DIRECT SALES

U.S. TECHNICAL SUPPORT

Direct your inquiries to the Technical Support Department if your question is about hardware and software compatibility specific to Sierra games (e.g., sound card configuration and memory management). Technical assistance is available by phone, fax or mail.

Sierra On-Line
Technical Support
PO Box 85006
Bellevue, WA 98015-8506
Phone: (206) 644-4343
M-F, 8:15 am - 4:45 pm
Fax: (206) 644-7697

Modem Support

For on-line support and hints:

U.S.

Sierra BBS: (206)644-0112
CompuServe: GO SIERRA
America Online: Keyword SIERRA
INTERNET: HTTP://WWW.SIERRA.COM

DIRECT SALES

Sierra On-Line
Direct Sales
PO Box 3404
Salinas, CA 93912
24 Hour Phone:
(800) 757-7707
Fax: (408) 644-2018

On-Line Sales

CompuServe: GO SI (CompuServe Mail)
GO SIERRA (Sierra BBS)

America Online: Keyword SIERRA

International Sales

Sierra On-line
Direct Sales
PO Box 3404
Salinas, CA 93912-3404
Fax: (408) 644-2018

U.K. CUSTOMER SERVICE/TECHNICAL SUPPORT

Sierra On-Line Limited
Customer Support
4 Brewery Court
The Old Brewery
Theale, Reading, Berkshire
RG7 5AJ United Kingdom
Phone: (44) 1734-303-171
M-F, 9:00 am - 5:00 pm
Fax: (44) 1734-303-362
Modem: (44) 1734-304-227
(Disk/CD replacements in the UK are
£6.00, or £7.00 outside the UK.)

FRANCE CUSTOMER SERVICE/TECHNICAL SUPPORT

Coktel Vision
Parc Tertiaire de Meudon
Immeuble "Le Newton"
25 rue Jeanne Braconnier
92366 Meudon La Foret Cedex
Phone: (33) 1-46-01-4650
7 jours sur 7 de 9h à 21h
Fax: (33) 1-46-31-7172
(Disk/CD replacements: Call for
information)

GERMANY CUSTOMER SERVICE/TECHNICAL SUPPORT

Sierra Coktel Vision Deutschland
Robert-Bosch-Str. 32
D-63303 Driedach
Hotline: (06103) 99 40 40
Fax: (06103) 99 40 35

HINTS

U.S.

1-900-370-5583
\$.75 per minute

Sierra On-Line
Attn: Hints
PO Box 53210
Bellevue, WA 98015-3210

CANADIAN HINTLINE

1-900-451-3356

\$1.25 per minute

(U.S. and Canadian hint line users must
be 18 years or older, or have parental
permission.) You may also contact
Direct Sales to order a hintbook.

U.K. HINTS

New Sierra Hint Line: For adventure
games released after January 1, 1993.

Charged 39p/minute cheap rate,
49p/minute at other times. Maximum
call length: 7.5 minutes. Maximum
charge cheap rate: £2.92, £3.67 other
times. Must have permission of the
person who pays the phone bill before
calling (line available UK only).

Old Sierra Hint Line: For adventure
games released up to December 31,
1992. Calls are charged at normal
telephone rates.

New Games Hint Line:
(0891)-660-660

Old Games Hint Line: (within UK):
(0) 1734-304-004

Old Games Hint Line (outside UK):
(44) 1734-304-004

France Hints
Hint Line: (33) 1-36-68-4650





THE SIERRA NO-RISK GUARANTEE

The Promise: We want you to be happy with every Sierra Product you purchase from us. Period. If for any reason you're unhappy with the product, return it within 30 days for an exchange or a full refund...EVEN IF YOU BOUGHT IT RETAIL. (Hardware ordered direct must be returned within ten days.)

The only Catch: You've got to tell us why you don't like the game. Otherwise, we'll never get any better. Send it back to us and we promise we'll make things right. (If you bought it at a retail outlet, please send your original sales receipt.)

If you find that you need to send for replacement CD disks, send the original disks to:

U.S.
Sierra On-Line Returns
PO Box 3404
Salinas, CA 93912

Europe
Sierra On-Line Limited
Attn: Returns
4 Brewery Court
The Old Brewery,
Theale, Reading, Berkshire
RG7 5AJ United Kingdom

Be sure to include a note stating your computer type. We will gladly replace your program free of charge during the first 90 days of ownership. (Please enclose a copy of your dated sales receipt with your request.) After 90 days, there is a \$10.00 (£6.00) charge for a replacement compact disk.

WARRANTY

IMPLIED WARRANTIES LIMITED: EXCEPT AS STATED ABOVE, SIERRA MAKES NO WARRANTY, EXPRESS OR IMPLIED, REGARDING THIS PRODUCT. SIERRA DISCLAIMS ANY WARRANTY THAT THE SOFTWARE IS FIT FOR A PARTICULAR PURPOSE, AND ANY IMPLIED WARRANTY OF MERCHANTABILITY SHALL BE LIMITED TO THE NINETY (90) DAY DURATION OF THIS LIMITED EXPRESS WARRANTY AND IS OTHERWISE EXPRESSLY AND SPECIFICALLY DISCLAIMED. SOME STATES DO NOT ALLOW LIMITATIONS ON HOW LONG AN IMPLIED WARRANTY LASTS, SO THE ABOVE LIMITATION MAY NOT APPLY TO YOU.

NO CONSEQUENTIAL DAMAGES: SIERRA SHALL NOT BE LIABLE FOR SPECIAL, INCIDENTAL, CONSEQUENTIAL OR OTHER DAMAGES, EVEN IF SIERRA IS ADVISED OF OR AWARE OF THE POSSIBILITY OF SUCH DAMAGES. THIS MEANS THAT SIERRA SHALL NOT BE RESPONSIBLE OR LIABLE FOR LOST PROFITS OR REVENUES, OR FOR DAMAGES OR COSTS INCURRED AS A RESULT OF LOSS OF TIME, DATA OR USE OF THE SOFTWARE, OR FROM ANY OTHER CAUSE EXCEPT THE ACTUAL COST OF THE PRODUCT. IN NO EVENT SHALL SIERRA'S LIABILITY EXCEED THE PURCHASE PRICE OF THIS PRODUCT. SOME STATES DO NOT ALLOW THE EXCLUSION OR LIMITATION OF INCIDENTAL OR CONSEQUENTIAL DAMAGES, SO THE ABOVE LIMITATION OR EXCLUSION MAY NOT APPLY TO YOU.

You are entitled to use this product for your own use, but may not sell or transfer reproductions of the software manual or book to other parties in any way, nor rent or lease the product to others without prior written permission of Sierra. You may use one copy of the product on a single terminal connected to a single computer. You may not network the product or otherwise install it on more than one computer or computer terminal at the same time.

CREDITS

Designer / Director / Writer
Tammy Dargan

Producers
Tammy Dargan
Phy Williams

**Art Director /
Director of Photography**
Rod Fung

Lead Programmers
Sean Mooney
Randy MacNeill

Music
Dan Kehler

Lead Artist
Terry Robinson

Artists
Donald Waller
Robin Braze-Phanco
Karin Nestor
Deanna Yhalkee
Phy Williams

Programmers

Arijit De
Chris Carr
Michael Leo Chong
Michael Lytton

Assistant Designer
Susan Frischer

Sierra Studios

Bill Crow
Craig Denny
Bob Ballew
Ron Lawson
Rob Koepfel

Production Sound Mixer
Wally Andrews

Team Quality Assurance
Jon Meek, Lead
Dan Woolard

**Audio Post - Production &
Sound Effects**

Dan Kehler
Victor Crews
Rick Spurgeon
Kelli Spurgeon

QA Configuration

Michael D. Jones
Steve Deckert
Marsha Mc Carty
Cindy Romero
Bill Davis Jr.
Sharon Simmons
Paul Trowe
Joe Carper
Jillian Leonard
John Cunney
John Ratcliffe
Mike Pickhinkle
John Trauger
Scott Howell
Mike Brosius
Leonard Salas

LAPD SWAT Advisors

Officer Bob Bennyworth
Officer Steve Massa
Officer Greg Horton
Officer Lou Velalobos
Officer Dave Cervantes
Officer Steve Stear



**Weapons Handlers**

Stembridge Gun Rentals, Inc.
Sid Stembridge
Roland Bleitz

Special Effects Make-up

Jeff White

Cast

Eric Flom	SWAT Pup
Steve Barkley	Sgt. Rooker
Doug Morrisson	Officer Pacmeyer
L. Peter Callender	Officer JD Saunders
John Eggold	Sgt. Pauldon
Bryan Kent	Sgt. Pruett
Tom Dryden	Officer Tom Denton
Christopher Boylan	Officer Tony Carmichael
Micheal Reed	Officer Scotty 'Mad Dog' Wixell
Tony Vella	Officer Frank 'Hot Dog' Rhea
Tom Cassel	Officer Danny Tello
Jim Tuck	Lt. Hancock
Dolores Golightly	Lucy Long
Joseph Murphy	Patrick Allen
Nick Scoggin	Militia Leader
Roy Conrad	Herbert Long
Jeannie McKelvey	Katie Long
Jarion Monroe	Officer Pete Monroe
Keith Kelly	Sidney Devon

Terry Lewis
Sharon Tuck
Carlos Sanchez
Patrick Allen Tromborg
Kettie Massengale-Chamlin
Richard Dupell
Jeff Richardson
Brian Leonard
Billy Bob Bates
Bobby Joe Bates

Officer Bob Lewis
Mrs. Schneibly
Hector Martinez
Officer Tobin
Coco Brown
Ron Eastman
Sgt. Ross
Andy Durham
Militia Member
Militia Member

John Matthews, Laser Products
Heckler & Koch
Robbie Barkman, Robar Industries
Rick Regan, Leupold & Stevens, Inc.
Gilman Mayfield Firearms
Marie Salerno, SAG
Larry Glick, National Tactical Officers
Association
Chamlin Enterprises
Nancy Miller, Good Company Players
Jerry Bowerman
Craig Alexander

Print Production Manager

Lori Lucia

Special Thanks

Chief Daryl F. Gates, Ret. LAPD
Lt. Tom Runyan, LAPD
Sgt. Andy Lamprey, LAPD
Sgt. Mike Albanese, LAPD
Officer Joe Cordova, LAPD
Officer Patrick Martin, LAPD
The Officers of D Platoon, LAPD
Lt. Michael Hillmann, LAPD
LAPD Air Support
Ron McCarthy, Ret. LAPD
Bill Pegler, LASH / Television Equipment
Associates, Inc.

DEDICATED TO THE TACTICAL OFFICERS WHOSE
LIVES WERE LOST IN THE LINE OF DUTY.



S I E R R A ®

© 1995 Sierra On-Line, Inc. ® and/or ™
designate trademarks of, or licensed to Sierra
On-Line, Inc. All rights reserved. Bellevue, WA
98007. U.S. Patent Nos. 5,287,446; 5,425,139;
5,430,835; and 5,377,997. Other U.S. and
Foreign Patents Pending.