



S I E R R A

©1995 Sierra On-Line, Inc., Bellevue, WA 98007. All rights reserved.
® and/or ™ designate trademarks of or licensed to Sierra On-Line, Inc.

THUNDER[®]

FOR WINDOWS 95



835564330/5556150



S I E R R A

CONTENTS

GAME INSTALLATION	2
TECHNICAL SUPPORT/DIRECT SALES	
U.S. Technical Support	2
Modem Support	3
Direct Sales	3
On-Line Sales	3
International Sales	4
U.K. CUSTOMER SERVICE/TECHNICAL SUPPORT	4
FRANCE CUSTOMER SERVICE/TECHNICAL SUPPORT	5
GERMANY CUSTOMER SERVICE/TECHNICAL SUPPORT	5
HINTS	
U.S.	6
U.K.	6
France	7
Germany	7
THE SIERRA NO-RISK GUARANTEE	7
U.S. Returns	8
Europe Returns	8
GAME CREDITS	9
WARRANTY	10

GAME INSTALLATION

Windows® 95 Installation

1. Start Windows® 95.
2. Put the Thexder CD disk #1 into your computer's CD-ROM drive.
3. Appearing on the computer screen will be the question, "Do you wish to install Thexder at this time?" Click on the "Yes" button.
4. Follow the on screen instructions.

TECHNICAL SUPPORT/ DIRECT SALES

U.S. Technical Support

Direct your inquiries to the Technical Support Department if your question is about hardware and software compatibility specific to Sierra games (e.g., sound card configuration and memory management). Technical assistance is available by phone, fax, mail, or modem.

Sierra On-Line
Technical Support

PO Box 85006

Bellevue, WA 98015-8506

Phone: (206) 644-4343 M-F, 8:15 am - 4:45 pm

Fax: (206) 644-7697



Modem Support

For on-line support and hints:

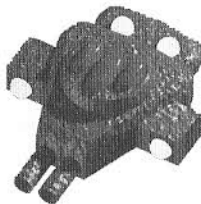
Sierra BBS: (206)644-0112
 CompuServe: GO SIERRA (Sierra Forum)
 America Online: Keyword: SIERRA
 INTERNET: HTTP://WWW.SIERRA.COM

Direct Sales

Sierra On-Line
 Direct Sales
 PO Box 3404
 Salinas, CA 93912
 24 Hour Phone: (800) 757-7707
 Fax: (408) 644-2018

On-Line Sales

CompuServe: GO SI (CompuServe Mall)
 GO SIERRA (Sierra Forum)
 America Online: Keyword: SIERRA

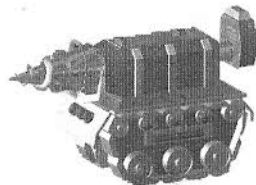


International Sales

Sierra On-line
 Direct Sales
 PO Box 3404
 Salinas, CA 93912-3404
 Fax: (408) 644-2018

U.K. CUSTOMER SERVICE/ TECHNICAL SUPPORT

Sierra On-Line Limited
 Customer Support
 4 Brewery Court
 The Old Brewery
 Theale, Reading, Berkshire
 RG7 5AJ United Kingdom
 Phone: (44) 1734-303-171
 M-F, 9:00 am - 5:00 pm
 Fax: (44) 1734-303-362
 Modem: (44) 1734-304-227
 (Disk/CD replacements in the UK are £6.00,
 or £7.00 outside the UK.)



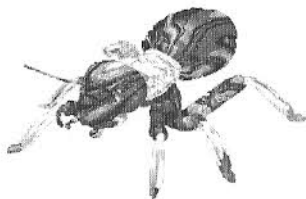
FRANCE CUSTOMER SERVICE/ TECHNICAL SUPPORT

Coktel Vision
 Parc Tertiaire de Meudon
 Immeuble "Le Newton"
 25 rue Jeanne Braconnier
 92366 Meudon La Foret Cedex

Phone: (33) 1-46-01-4650
 7 jours sur 7 de 9h a 21h
 Fax: (33) 1-46-31-7172
 (Disk/CD replacements: Call for information)

GERMANY CUSTOMER SERVICE/ TECHNICAL SUPPORT

Sierra Coktel Vision Deutschland
 Robert-Bosch-Str. 32
 D-03303 Drieich
 Hotline: (0)6-103-99-4040
 Fax: (0)6-103-99-4035

**HINTS
U.S.**

1-900-370-5583
 \$.75 per minute

Sierra On-Line
 Attn: Hints
 PO Box 53210
 Bellevue, WA 98015-3210

Canadian Hintline

1-900-451-3356
 \$1.25 per minute (Canadian)
 (U.S. and Canadian hint line users must be 18 years or older, or have parental permission.) You may also contact Direct Sales to order a hintbook.

U.K.Hints

New Sierra Hint Line: For adventure games released after January 1, 1993. Charged 39p/minute cheap rate, 49p/minute at other times. Maximum call length: 7.5 minutes. Maximum charge cheap rate: £2.92, £3.67 other times. Must have permission of the person who pays the phone bill before calling (line available UK only).

Old Sierra Hint Line; For adventure games released up to December 31, 1992. Calls are charged at normal telephone rates.

New Games Hint Line: (within UK only)
(0) 891-660-660

Old Games Hint Line: (within UK)
(0) 1734-304-004

Old Games Hint Line (outside UK)
(44) 1734-304-004

France Hints

Hint Line: (33) 1-36-68-4650

Germany Hints

Hint Line: (0)1-90-51-5616
Kosten 23 Pf für 12 sek (nur in Deutschland möglich)

THE SIERRA NO-RISK GUARANTEE

The Promise: We want you to be happy with every Sierra Product you purchase from us. Period. If for any reason you're unhappy with the product, return it within 30 days for an exchange or a full refund... EVEN IF YOU BOUGHT IT RETAIL. (Hardware ordered direct must be returned within ten days.)

The only Catch: You've got to tell us why you don't like the game. Otherwise, we'll never get any better. Send it back to us and we promise we'll make things right. (If you bought it at a retail outlet, please send your original sales receipt.)

If you find that you need to send for replacement CD discs, send the original discs to:

U.S.

Sierra On-Line Returns
PO Box 3404
Salinas, CA 93912

EUROPE

Sierra On-Line Limited
Attn: Returns
4 Brewery Court
The Old Brewery,
Theale, Reading, Berkshire
RG7 5AJ United Kingdom

Be sure to include a note stating your computer type. We will gladly replace your program free of charge during the first 90 days of ownership. (Please enclose a copy of your dated sales receipt with your request.) After 90 days, there is a \$10.00 (£6.00) charge for a replacement compact disc.

GAME CREDITS

DESIGNED BY:

Robert Clardy and Kirt Lemons

DIRECTED BY:

Robert Clardy and Michael Branham

PRODUCED BY:

Steven Miles, Sierra On-Line

CREATED BY:

Synergistic Software

PROGRAMMING:

Michael Branham
Cheryl Makovsky
David Jackson

ART:

Kirt Lemons
Mike McMillen
Patrick Watje
Jerome Speed
Alan Speed
Linda Westerfield
Carl Square
Peter Watje
Kate Policani
Kevin Ring
Jeremy Jones

MUSIC:

Christopher Barker
Craig Utterback

SOUND EFFECTS:

Craig Utterback

LEVEL DESIGN:

Robert Clardy
Linda Westerfield
Derek Clardy
Bob Westerfield

VOICE TALENT:

Craig Utterback
Julie Utterback
Michael Branham

TEST and QA:

Linda Westerfield
Derek Clardy
Bob Westerfield
Erin Durdy
Wes Cumberland
Chris Johansen, Sierra On-Line

ONLINE MANUAL:

Michael Branham, Linda Westerfield and
Steven Miles

Special thanks and assistant game designer kudos for some great design ideas and game play suggestions to Ken Williams, Derek Clardy, Steven Miles and Michael Branham, as well as S. Uesaka and H. Godai of Game Arts, the creators of the classic 1987 version of Thexder.

WARRANTY

IMPLIED WARRANTIES LIMITED: EXCEPT AS STATED ABOVE, SIERRA MAKES NO WARRANTY, EXPRESS OR IMPLIED, REGARDING THIS PRODUCT. SIERRA DISCLAIMS ANY WARRANTY THAT THE SOFTWARE IS FIT FOR A PARTICULAR PURPOSE, AND ANY IMPLIED WARRANTY OF MERCHANTABILITY SHALL BE LIMITED TO THE NINETY (90) DAY DURATION OF THIS LIMITED EXPRESS WARRANTY AND IS OTHERWISE EXPRESSLY AND SPECIFICALLY DISCLAIMED. SOME STATES DO NOT ALLOW LIMITATIONS ON HOW LONG AN IMPLIED WARRANTY LASTS, SO THE ABOVE LIMITATION MAY NOT APPLY TO YOU.

NO CONSEQUENTIAL DAMAGES: SIERRA SHALL NOT BE LIABLE FOR SPECIAL, INCIDENTAL, CONSEQUENTIAL OR OTHER DAMAGES, EVEN IF SIERRA IS ADVISED OF OR AWARE OF THE POSSIBILITY OF SUCH DAMAGES. THIS MEANS THAT SIERRA SHALL NOT BE RESPONSIBLE OR LIABLE FOR LOST PROFITS OR REVENUES, OR FOR DAMAGES OR COSTS INCURRED AS A RESULT OF LOSS OF TIME, DATA OR USE OF THE SOFTWARE, OR FROM ANY OTHER CAUSE EXCEPT THE ACTUAL COST OF THE PRODUCT. IN NO EVENT SHALL SIERRA'S LIABILITY EXCEED THE PURCHASE PRICE OF THIS PRODUCT. SOME STATES DO NOT ALLOW THE EXCLUSION OR LIMITATION OF INCIDENTAL OR CONSEQUENTIAL DAMAGES, SO THE ABOVE LIMITATION OR EXCLUSION MAY NOT APPLY TO YOU.

You are entitled to use this product for your own use, but may not sell or transfer reproductions of the software manual or book to other parties in any way, nor rent or lease the product to others without written permission of Sierra. You may use one copy of the product on a single terminal connected to a single computer. You may not network the product or otherwise install it on more than one computer or computer terminal at the same time.