

# TROPHY BASS

Loudmouth vs Bigmouth

Talk all you want about how the big one got away. Trophy Bass® will make you put your money where your mouth is. With enough gear to sink a boat and competition in five kinds of tournaments, you'll have plenty of chances to create new fish stories.

# 5



Realistic  
Fishing  
Fun from  
the #1  
Fishing  
Series



Available Fall 2001

SIERRA™

Call 1-800-757-7707 or visit your local retailer today. See our web site at [www.sierra.com](http://www.sierra.com).

© 2001 Sierra On-Line, Inc. All Rights Reserved. Sierra is a trademark and Trophy Bass is a registered trademark of Sierra On-Line, Inc. Field & Stream is a registered trademark of Times Mirror Magazines, Inc. Used under license by Sierra On-Line, Inc. Any other company and/or product names are the property of their respective owners. ® designates trademarks registered in the U.S.A. which may be registered in certain other countries.

# FIELD & STREAM TROPHY HUNTING 5



CD Key:



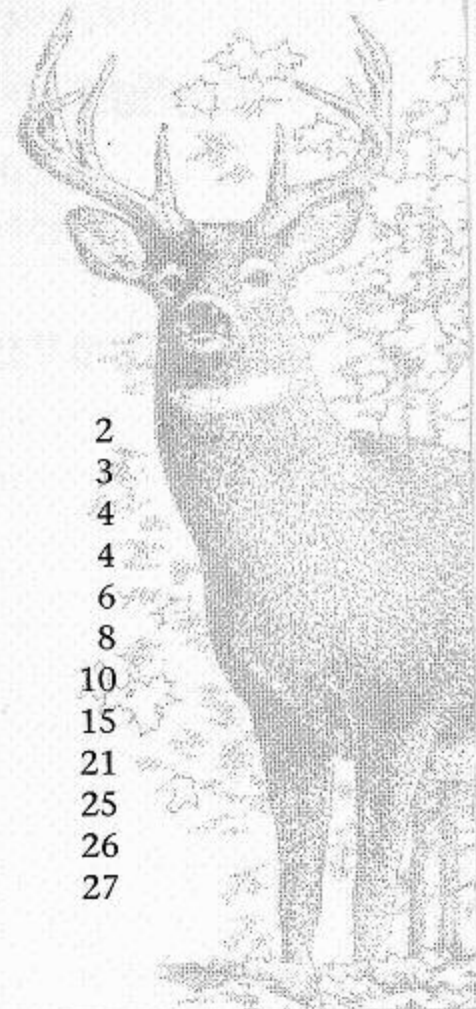
SIERRA™

*FIELD & STREAM*<sup>®</sup>

# TROPHY HUNTING 5

## Table of Contents

Installation	2
Begin Playing	3
Hunter Sign in	4
The Main Menu	4
Options	6
Default Game Controls	8
Playing The Game	10
Single Player Hunts	15
Online Hunting	21
Trophy Room	25
Hunter Rating	26
Contacting Sierra	27



**W**elcome to *FIELD & STREAM*®, *Trophy Hunting 5*... the most realistic hunting experience available indoors. Start a hunting career or just jump out and have a little fun in the quick hunt. So, if you're ready to get started hunting for that trophy deer, moose, caribou, bear, or elk just read on!

## Installation

In order to play *FIELD & STREAM*® *Trophy Hunting 5* you must first *install* the program on your computer's hard drive.

### AutoPlay (The Quick and Easy Way to Install Your Game)

The *Trophy Hunting 5* CD contains an Autoplay program that automatically guides you through the installation process.

1. Put the CD into your computer's CD ROM drive.
2. Once the Autoplay screen appears, click on the **Install** button.
3. Follow the on-screen installation instructions. Once you have successfully installed the game, you're ready to play!

### What to do if AutoPlay Doesn't Work!

If the AutoPlay program doesn't automatically bring up the AutoPlay installation screen, you need to start the program yourself.

1. Click on the **My Computer** icon on your computer's desktop.
2. Right-click on the CD ROM drive showing the *FIELD & STREAM*® *Trophy Hunting 5* icon.
3. Click the **Autoplay** option.
4. After the Autoplay screen appears, click on the **Install** button to begin.

### Begin Playing

Now that you've installed the game, there are several ways to actually begin playing:

1. The Autoplay feature automatically starts the game each time you insert the game CD into your CD ROM drive.
2. You may also begin the game by clicking on your desktop **Start** button then selecting *Programs>Sierra> FIELD & STREAM*® *Trophy Hunting 5*.



Hunter Sign In Screen

## Hunter Sign In

The Hunter Sign In screen allows you to enter a new hunter or select an existing hunter. This Hunter Name is used in both single and multiplayer games. Your hunter rating and trophies will also be displayed under this name. A new name can be used at any time, but you will be starting over with a new hunter rating.

## The Main Menu

The Main Menu screen displays your major gaming options.

- **HUNT NOW.** Drop into a random location with some gear and a rifle and start hunting. Select this hunt when you're just looking to get in the game and hunt right away.



Main Menu Screen

- **SINGLE PLAYER.** Choose this option if you will be hunting alone. Single player will allow you to choose from a hunting trip, a hunting challenge, or the shooting range. (See single player hunts section)
- **ONLINE HUNT.** Join any online game and start hunting. Find that big trophy for a listing on the *FIELD & STREAM® Trophy Hunting 5* online high scores list.
- **TROPHY ROOM.** View the trophies from successful single player hunts.
- **MORE INFO.** Click here to find more information about *FIELD & STREAM® Trophy Hunting 5*. Look here for hunting tips, and the online manual.

- **OPTIONS.** Click here to change certain game options. See the Game Options section for more information.
- **EXIT.** Click on the Exit button if you wish to exit the game at this time. You are immediately returned to your computer's desktop.

## Options

Many aspects of *Trophy Hunting 5* can be customized. The Options screen allows you to make changes to sound, graphics, and game options. When you have finished making your selections, click **Accept** to record your changes. Click the **Default** button if you are not happy with changes you have made and wish to revert back to *ORIGINAL* game settings. Choose **Cancel** to return to the previous screen without saving any changes.

- **Sound.** Set the volume on the various sound components using the slider bars provided. Moving the slider bar all the way to the left turns off the sound.
- **Screen Resolution.** The game will find and try to run the game in the best screen resolution for your system. If you wish to change the screen resolution, click the button to roll through all available screen resolutions. Note that changing

the screen resolution can make a noticeable difference in the speed of the game.

- **Detail Level.** The optimum detail level will automatically be chosen by the game. To make a change, click the **Detail Level** button to roll through the available options. Note that changing the detail level can have a noticeable effect on the speed of the game.

## Advanced

The advanced settings allow you to personalize how the game looks on your computer. When the game loads, it will preset the settings to be optimal for your system. Note that making changes to the advanced settings can have a noticeable effect on the speed of the game.

## Display

The Display Device button allows you to select the video card you wish to use to display the game if you have multiple video cards.

## GAME OPTIONS

- **Mouse Sensitivity.** Use this to slow the responsiveness of the mouse while playing the simulation. Note this will not have any effect on your mouse settings outside the game.

- **Mouse Reverse.** Change the Mouse Reverse button to *YES* to reverse the Look Up, and Look Down control on the mouse.
- **Difficulty Settings.** *FIELD & STREAM® Trophy Hunting 5* can be played in one of three different difficulty settings. Setting the difficulty to *EASY* will give you access to features not available in the higher the medium or hard settings. See the Difficulty Settings section for more information.

## Game Controls

*FIELD & STREAM® Trophy Hunting 5* is played with the keyboard and mouse. The following chart shows the keyboard and mouse controls used in the game.

### Movement

Action	Control Key
Walk Forward	<W> or <Up Arrow>
Walk Backward	<S> or <Down Arrow>
Step Left	<A> or <Left Arrow>
Step Right	<D> or <Right Arrow>
Sneak (slow movement)	<1>
Normal Walk	<2>
Fast Walk	<3>
Look Right	Mouse or <Numpad 6>
Look Left	Mouse or <Numpad 4>

Look Up  
Look Down  
Crouch  
Stand

### Shooting

**Action**  
Toggle Weapon up/down  
Fire Weapon  
Steady Shot

### Mouse Pointer

**Action**  
Toggle Freelook/Mouse Pointer  
Use Item

### Miscellaneous

**Action**  
Use Binoculars  
Pause Game  
Options Menu  
Toggle GPS Up/Down  
Cycle GPS Modes  
Cycle species GPS  
Talk to Other Players  
Bring up Chat Window  
Change Chat Window Size

Mouse or <Numpad 8>  
Mouse or <Numpad 2>  
<Page Down>  
<Page Up>

**Control Key**  
<Right Mouse Button>  
<Left Mouse Button> (when weapon is up)  
<H> (Hold while shooting)

**Control Key**  
<Space Bar>  
<Left Mouse Button> (while mouse pointer is on the screen)

**Control Key**  
<B>(or click the item in inventory)  
<P>  
<Esc>  
<G>  
<F>(Only available in certain modes)  
<,> <.>  
<Enter> (Only available in Multi-player)  
<C>(Multi-player only)  
<Alt> + <C>

Print Current Screen	<Alt> + <P>
Toggle sight-in HUD	<V>
Add waypoint(GPS)	<X>
Lock animal AI status	<L>
Weapon Edit(shooting range)	<Z>
Weather Edit(shooting range)	<R>
Inventory Hot Keys	Keyboard < F1 > through < F6 >

## Playing the Game

Now that you have looked over the control for the game, lets take a look at the game screen you will be looking at while playing the game.



GPS

## GPS

To bring up the GPS, you can first hit the <space> bar to bring up the mouse cursor, then click on the **GPS** icon at the upper left side of the screen, or you can toggle the GPS up and down with the <G> key.

The GPS has several *MODES* that can be changed by clicking on the **Mode** button. Each mode will offer different information about the player, and the animals being hunted. Note that some GPS modes will not be available at the higher difficulty levels. Read below to get more information about the modes available on the GPS and how they function.

### Information

**Compass.** This compass moves with you, and always shows you **EXACTLY** which direction you are facing. The red line at the top of the compass is you, so if the red line is on the *E* you are facing east.

**Time.** This shows you the exact time on this hunting day. Keep an eye on this time, because all hunting days end at 6 pm, and you don't want to be tracking an animal when the hunt ends.

**Temperature.** This will show you the current temperature in this hunt.

**Species.** This will show you the species of the animal being hunted in the game.

**Wind Direction.** This is a text version of the wind direction. You may also view the wind direction on the compass by looking at the blue (Wind Direction) triangle around the outside of the compass. This Wind Direction Triangle will show you where the wind is coming from in relation to the direction you are facing. If you are heading East, and the Wind Direction Triangle is over the *E* then you are headed directly into the wind. If however, the Wind Direction Triangle is on the *W* then you are moving with the wind, and most likely letting every animal for several hundred yards know you are coming.

**Coordinates.** The coordinates in *FIELD & STREAM® Trophy Hunting 5* are there to help you navigate our hunting areas and do not correspond to anything in real life. Your map location is displayed on the GPS.

**Extra Stuff.** When playing the game at the *EASY* or *MEDIUM* setting, the GPS can also be set up to provide you with an Animal Finder. Read the section titled Difficulty Settings/Hunting Aids to find out more about the Animal Finder.

## GAME FINDER

The game finder is a very useful tool that is built into the GPS unit in the game. The Game finder can be brought up by hitting the <F> key while the GPS unit is active on the screen. Once the Game Finder unit is activated; the hunter will show up as a blue dot in the center of a grid, with animals showing up as colored dots around the hunter. The *EASY* setting allows unlimited usage of the Game Finder, whereas in *MEDIUM* you have only three uses before the Game Finder is disabled. There is no Game Finder in the *HARD* setting. The Game Finder can be cycled to different species by using the <, > and <.> keys.

## WAYPOINTS

The GPS allows a player to set a number of waypoints. Hit the <X> key to mark a spot. This spot will be named and recorded into the GPS unit. The compass at the top of the GPS will show a green arrow that will indicate the direction you need to go to reach the selected waypoint. Use the arrow buttons to change to a different waypoint. The GPS unit is able to hold up to 10 waypoints. If you mark a waypoint after number 10, the GPS will erase waypoint number 1 and save it as the new location marked.



## ANIMAL AI STATUS

The animal AI status gives the hunter a look in the mind of the game animals. The animal's AI Status is shown by cycling to the status indicator function of the GPS unit. Once the indicator is up, place the crosshairs on the animal you wish to see the state of. The animal will be shaded green when selected. You will now see the various AI states of the animal displayed on the GPS unit. For both scent and sound the indicators will show how much the animal is attracted to you by the green side (right) of the display and repelled by you by the red (left). The sight indicator shows whether the animal can see you and how much of a threat it perceives you to be. The other information shown on the indicator is the sex and weight of the animal as well as the species.

## INVENTORY

Your inventory consists of all of the item you carry on each hunt. These items are visible at all times as icons across the top of the screen. If you wish to use an item from your inventory you can hit the <space> bar to get the mouse cursor, and then click the icon of the item you wish to use. Hitting the <F1> through <F6> keys can also use the inventory items. The inventory icon farthest to the left corresponds to the <F1> key, the next the <F2> key, etc up to the sixth item farthest to the right being the <F6> key.

## FIREARMS/BOWS

The firearm or bow you currently have can be toggled up or down with the **Right Mouse** button. Click the button once to bring the weapon up to aim, then click it again to put it down. While the weapon is up, you can click the **Left Mouse** button to fire. If your Firearm is equipped with a scope, bringing the firearm up to the aiming position will automatically zoom you into the Scope View.

## NARRATOR HELP

You will find that while playing *FIELD & STREAM® Trophy Hunting 5* you will hear an announcer giving you some tips and information during your hunt. The announcer is there to give you some information about your hunt, and how it is going. Listen to what he is saying, as a lot of what he has to say can be very helpful to your having a successful hunt.

## Single Player Hunts

As a single player you may choose Hunt Challenge, Hunting Trip, Shooting Range or click the **Back** button to return the Main Menu.



Single Player Hunts

## HUNTING CHALLENGE

We set the conditions — and you take the animal. We have come up with an increasingly difficult set of conditions to test your hunting expertise.



Hunting Challenge

Click on the **Tips** button to get specific help related to challenge you are facing.

Make sure to read the **Goals** on each mission. Many of the locations in *FIELD & STREAM® Trophy Hunting 5* have multiple species, and it is important for you to take the proper animal in your hunt. Once a hunt has been played, a dot will show up next to the mission title in the mission select menu. This dot simply shows that the mission has been played, so you can keep track of which missions you still have not yet tried.



Hunting Trip

## HUNTING TRIP

Set up your own hunt and find that monster trophy you've always wanted. On a Hunting Trip you can edit your Location,

Weapon, and Accessories (see below). Once you are happy with the selections, click the **Go Hunting** button to begin your hunt.

### Choosing a Location

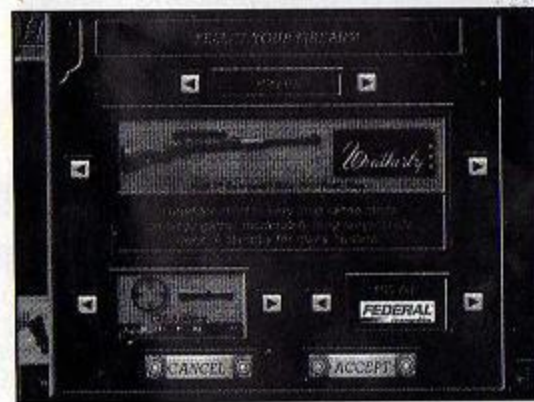
*FIELD & STREAM® Trophy Hunting 5* has 13 hunting locations. When choosing a location for a hunt you may also change weather conditions, and choose the season and species of animal you wish to hunt. Choose **Cancel** to go back without making any changes. Choose **Accept** to keep changes and return to the Hunting Trip screen.



Choosing a Location

### Selecting a Weapon

Choose between Shotgun, Bow, Muzzleloader, or Rifle then select the specific model you wish to use for your hunt. After choosing a specific weapon, you may decide on site type, and bullet weight. Choose **Cancel** to go back without making any changes. Choose **Accept** to keep changes and return to the Hunting Trip screen.



Selecting a Weapon

### Hunting Accessories

From the Hunting accessories menu you can choose calls, scents, stands, camouflage, an ATV, and binoculars for your hunt. Click on the accessories you want and drag them into an empty slot in your inventory. Choose **Accept** to keep changes and return to the Hunting Trip screen.



Hunting Accessories

## SHOOTING RANGE

Choose any firearm or bow and do a little target practice. This is a very good way to work on judging distances since there are numerous targets on the range with distances clearly marked.

## SCORING HUNTS

After each Hunting Challenge, or Hunting Trip you will receive a score up to a maximum of 100 points. This score is then used to compute your hunter rating. The better your score on each hunt the higher your Hunter Rating in *FIELD & STREAM® Trophy Hunting 5*.



Online Sign In

## Online Hunting

To start hunting with *Other Trophy Hunting 5* enthusiasts, you must first connect to the Internet, then simply click the **Online Hunt** button on the main menu. Once you have connected, you will be asked to enter your *Trophy Hunting 5* online account information. If you do not have an account, you can create one; the game will lead you through this very painless process. Note that the account name you choose is not the name you will see displayed in the online games. The Hunter Name you chose for use in your single player hunts will still be used in all online games, as will your hunter rating. Online games do count towards your hunter rating just as they do in a single player

game. For more information on your Hunter Rating see the Trophy Room section of this manual. From the Log In screen, you will go to the Main Lobby, where you can chat with other players, create/join games, or search for online friends playing the *Trophy Hunting 5*. The following is a look at the options available to you in the Main Lobby:

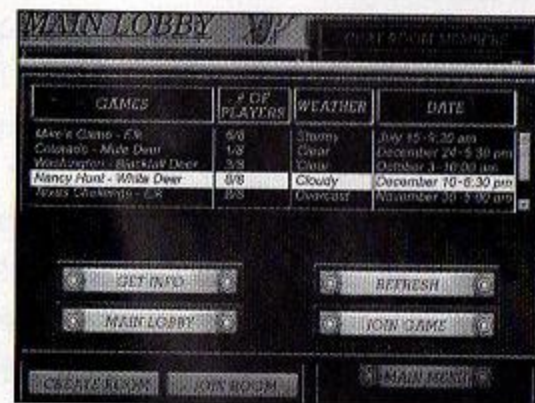
## CHAT WINDOW

**Send.** Click here to display messages in the chat window. All members in the current chat room will see your text. If you wish to speak directly to one member, see the Whisper section below.

**Whisper.** Select a name from the Members list, type your message, and then click **Whisper** to send to that member only. None of the other members will see your message. You can also use */W 'player\_Name'* message to whisper to players not in the current members list. This will allow you to talk with members in other chat rooms, or in a current game.

**Create Chat Room.** Click here to create a new chat room. Enter a password in the Password box if you wish this to be a private chat room.

**Join Chat Room.** Click here to get a list of available chat rooms. Click on the room you wish to enter, and then click the **Join** button. If this room has a password, you will be asked to enter the password after you click the Join button.



Game Lobby

## GAME WINDOW

**Search.** If you know the name of a member, you can use the search feature to find them in a game or other private chat room. Simply click the **Search** button and enter the name of the member you wish to find. If that player is found, their current location will be displayed in the main chat window.

**Create Game.** This is where you go to create a custom game. When you create a new hunt, you can add a password so the

game can remain private. You can also choose this to be a cooperative, or competitive hunt. See the Cooperative hunt section below.

**List Games.** Click here if you wish to join an existing game. If the game has a password, you will be asked to enter the password when you select **Join Game**.

**Trophy Room.** This will take you to the online Trophy Room. Here you will find a list of trophies from players in on-line games. While playing online you can send messages to the other players in the game. Press the <Enter> key on your keyboard, then type your message and press <Enter> again to send the message. This message will be shown to all players currently in your hunting area, and can be viewed in the Chat window.

**Cooperative Hunting.** In a cooperative hunt all players in the game are working together to bring down a single animal. Each member of the hunt will get a score and trophy room entry for the animal taken. Once a single animal has been wounded; all members in the game are looking for this animal. If a player tries to shoot a second animal, that player will be dropped from the game. Once that single animal has been taken, the game will end.

## Trophy Room

The Trophy Room is where *FIELD & STREAM® Trophy Hunting 5* keeps track of the high scores achieved during your hunts. The high scores can be sorted by all time top scores, or by individual players. Each species is kept track of individually. Click on any of the top hunts, and then click the View button to see the trophy and specific details from that hunt.

### Hunt Scores

Every time you go hunting in *FIELD & STREAM® Trophy Hunting 5* we will give you a score for the hunt. The score of a hunt is based on the following:

- Shot Placement
- Shot Accuracy
- Rack Size of animal (score zero for rack size if you shoot a doe!)
- Weight of animal
- Difficulty setting (Easy, Medium, or Hard)

The maximum number of points you can score in any hunt is 100. Anything over a 70 would be very, very good! Every score received on a hunt is then used to compute your Hunter Rating. Note that a score is not given for Quick Hunts.

**\*Deleting Characters:** Note that when deleting characters, you do not delete their high scores from the Trophy Room. Just because the character no longer exists, doesn't change the fact that they were able to achieve these scores. If you absolutely must remove the high scores, you can do this by un-installing, and then re-installing the game.



Hunt Results

### Hunter Rating

The hunter rating is a way to keep track of your expertise as a hunter in *FIELD & STREAM® Trophy Hunting 5*. Your hunter rating is computed based on the scores you receive for each hunt. The hunter rating is affected by *all* Hunting Trips, and Hunting Challenges, and *all* Online hunts but *not* the Quick Hunts.

### Score

0 - 30

30 - 45

45 - 55

55 - 65

65 - 70

70+

### Level

Novice

Apprentice

Hunter

Master Hunter

Guide

Master Guide

## Contacting Sierra

### CUSTOMER SERVICE, SUPPORT & SALES

#### United States

U.S.A. Sales Phone: (800) 757-7707

Hours: 24 hours a day, 7 days a week

International Sales: (425) 746-5771

Hours: Monday to Friday 8:00 a.m. - 4:00 p.m. PST

FAX: (916) 939-1010

Sierra Direct

PO Box 629001

El Dorado Hills, CA 95762-9972

Email: [customer.support@sierra.com](mailto:customer.support@sierra.com)

<http://www.sierra.com>

*Technical Support*  
310-649-8033

**United Kingdom**

Vivendi Universal Interactive Publishing UK Ltd.

Main: (0118) 920-9111

Monday to Friday, 9:00 a.m. - 5:00 p.m.

Fax: (0118) 987-5603

Disk/CD replacements in the U.K. are £6.00, or £7.00 outside the UK. Add

"ATTN.: Returns."

2 Beacontree Plaza,

Gillette Way,

Reading, Berkshire

RG2 0BS United Kingdom

**France**

Vivendi Universal Interactive Publishing France

32, Av de l'Europe

Bât Energy 1 (2e étage)

78 140 VELIZY-Villacoubaly

France

Téléphone: 01-30-67-90-50

Lundi au Jeudi de 10h à 19h

Vendredi de 10h à 18h

Fax: 01-30-67-90-65

**Germany**

Vivendi Universal Interactive Publishing Deutschland GmbH.

Paul-Ehrlich-Straße 1a

63225 Langen

Deutschland

Tel: (0) 6103-99-40-40

Montag bis Freitag von 10 - 19Uhr

Fax: (0) 6103-99-40-35

**On-Line Sales**

CompuServe United Kingdom:

GO UKSIERRA

CompuServe France:

GO FRSIERRA

Internet USA:

<http://www.sierra.com>

Internet United Kingdom:

<http://www.sierra-online.co.uk>

Internet France:

<http://www.sierra.fr>

Internet Germany:

<http://www.sierra.de>

**Disk and/or Manual Replacement:**

Product Returns\*:

Vivendi Universal Interactive Publishing International

Sierra On-Line Returns

4247 S. Minnewawa Ave.

Fresno, CA 93725

Vivendi Universal Interactive Publishing International

Sierra On-Line CD/Doco Replacement

4247 S. Minnewawa Ave.

Fresno, CA 93725

**Note:** To replace your CD(s) please send only the damaged CD and copy of your dated Receipt, if less than 90 days. After 90 days please include a \$10.00 handling fee along with the CD(s). For Documentation replacement, please include a \$5.00 handling fee and a photocopy ONLY of either your disk or CD. Payment should be made at the time of your request. Sorry, no credit cards.

\* Returns to this address valid in North America only.



## TECHNICAL SUPPORT

### North America

Sierra On-Line offers a 24-hour automated technical support line with recorded answers to the most frequently asked technical questions. To access this service, call (425) 644-4343, and follow the recorded instructions to find your specific topic and resolve the issue. If this fails to solve your problem, you may still write, or fax us with your questions, or contact us via our Web site.

Sierra On-Line  
 Technical Support  
 P.O. Box 85006  
 Bellevue, WA 98015-8506

Main: (425) 644-4343  
 Monday to Friday, 8:00 a.m. - 4:45 p.m. PST  
 Fax: (425) 644-7697

<http://www.sierra.com>  
[support@sierra.com](mailto:support@sierra.com)

### United Kingdom

Vivendi Universal Interactive Publishing UK Ltd. offers a 24-hour Automated Technical Support line with recorded answers to the most frequently asked technical questions. To access this service, call (0118) 920-9111, and follow the recorded instructions to find your specific topic and resolve the issue. If this fails to solve your problem, you may still write, or fax us with your questions or contact us via our Internet or CompuServe sites.

Vivendi Universal Interactive Publishing UK Ltd.  
 2 Beacontree Plaza,  
 Gillette Way,  
 Reading, Berkshire  
 RG2 0BS United Kingdom

Main: (0118) 920-9111  
 Monday to Friday, 9:00 a.m. - 5:00 p.m.  
 Fax: (0118) 987-5603

<http://www.sierra-online.co.uk>

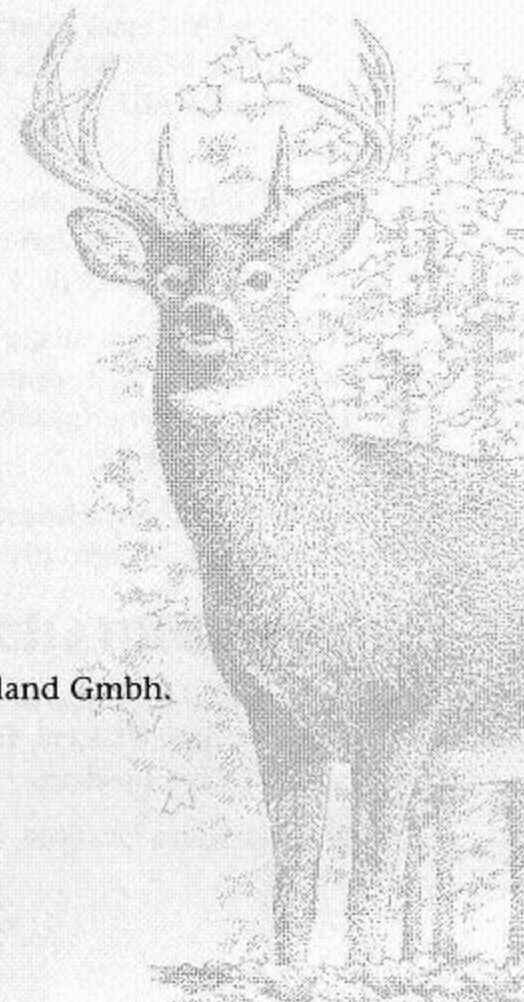
### France

Vivendi Universal Interactive Publishing France  
 32, Av de l'Europe  
 Bât Energy 1 (2e étage)  
 78 140 VELIZY-Villacoublay  
 France

Téléphone: 01-30-67-90-50  
 Lundi au Jeudi de 10h à 19h  
 Vendredi de 10h à 18h  
 Fax: 01 30 67 90 65  
<http://www.sierra.fr>

### Germany

Vivendi Universal Interactive Publishing Deutschland GmbH.  
 Technischer Kundendienst  
 Paul-Ehrlich-Straße 1a  
 63225 Langen  
 Deutschland



Tel: (0) 6103-99-40-40  
Montag bis Freitag von 10 - 19Uhr  
Fax: (0) 6103-99-40-35  
Mailbox: (0) 6103-99-40-35  
<http://www.sierra.de>

#### Spain

Vivendi Universal Interactive Publishing España  
NUESTRA SEÑORA DE VALVERDE Nº 23  
28034 MADRID

#### Spain

Tech Support Teléfono: 91 735 24 37  
Soporte técnico de lunes a Viernes  
de 09:30 a 15:00 y de 16:00 a 18:30

[www.havasinteractive.es](http://www.havasinteractive.es)  
Soporte Técnico: [soporte@havasinteractive.es](mailto:soporte@havasinteractive.es)  
Comercial: [comercial@havasinteractive.es](mailto:comercial@havasinteractive.es)

#### Italy

Vivendi Universal Interactive Publishing Italia spa  
Contattare il vostro distributore.

### SIERRA WARRANTY & LEGAL INFORMATION

Sierra's end user license agreement, limited warranty and return policy is set forth in the EULA.txt, found on the CD, and is also available during the install of the product.

© 2001 Sierra On-Line, Inc.